



Republic of the Philippines
Department of Education
SCHOOLS DIVISION OF SORSOGON
Sorsogon

January 22, 2025

Division Memorandum
No. *26* s. 2025

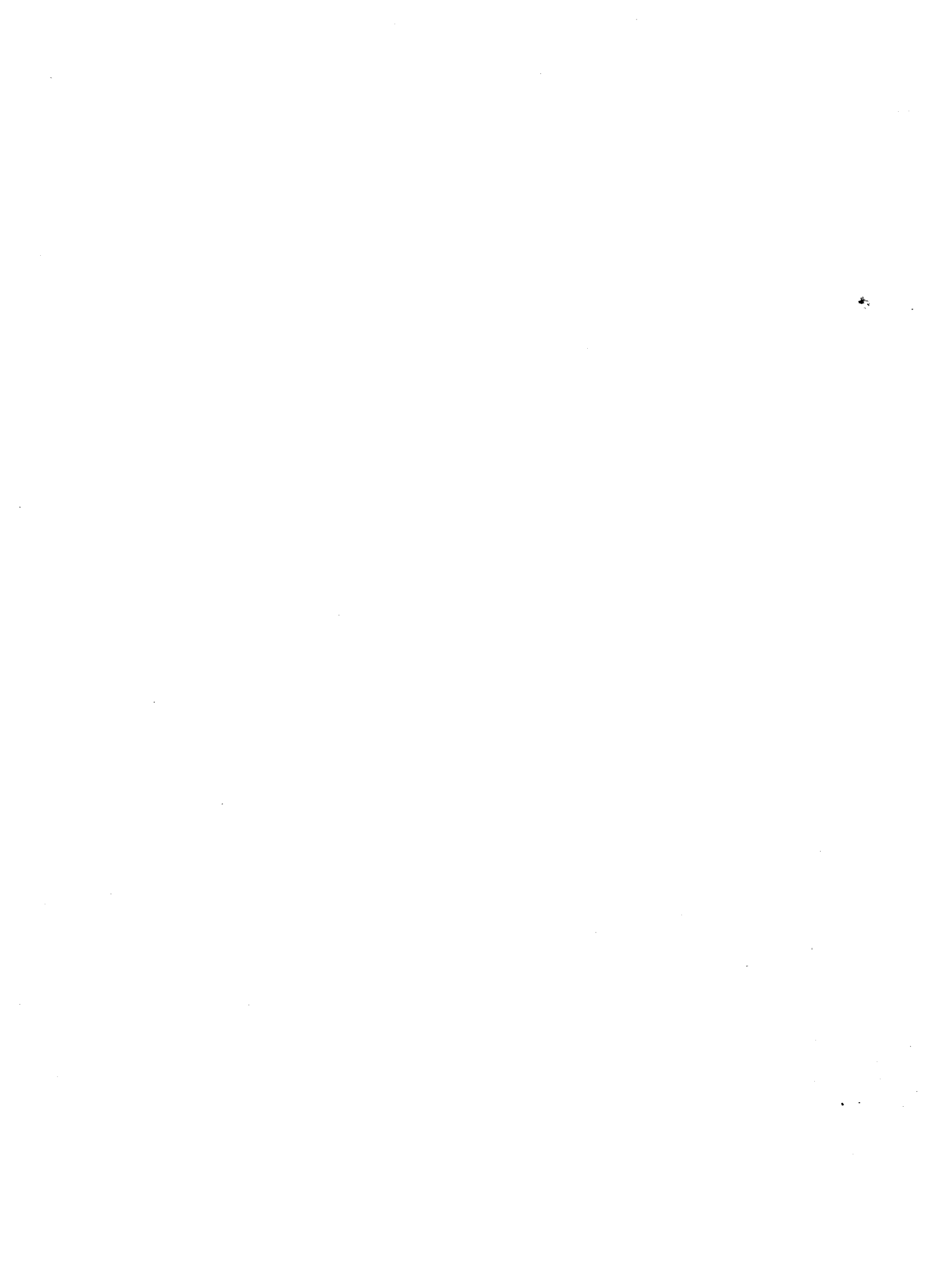
PARTICIPATION OF SDO-SORSOGON EDUCATORS TO NEAP E-LEARNING COURSES

To : Assistant Schools Division Superintendent
SGOD and CID Chiefs
Public Schools District Supervisors
School Heads
All Others Concerned

1. This Office calls all concerned to participate in the E-Learning Courses Scholarship Program Offered by the National Educators Academy of the Philippines as per DepEd Memorandum DM-OUHROD-2025-0127 "Provision of E-Learning Courses to Deped Educators".
2. As NEAP continues to deliver high quality professional development programs for school leaders, in-service teachers, and other teaching-related personnel, schools are strongly encouraged to support the participation of the selected school leaders and teachers.
3. Attached to this division memorandum are the following:
Enclosure 1- List of Participants
Enclosure 2- Undertaking
Enclosure 3- Confirmation Slip
4. Participants are advised to follow the schedule below:

Schedule		Link
Exploration	Official Start	https://tinyurl.com/ElearningPaxIntake1
January 27- February 4, 2025	February 5,2025	



5. The hard copies of confirmation slip and undertaking will be submitted by district on before January 27, 2025.





Republic of the Philippines
Department of Education
SCHOOLS DIVISION OF SORSOGON
Sorsogon

6. Complete details of this provision of E-learning courses can be found in the attached DepEd Memorandum (DM-OUHROD-2025-0127).
7. For questions and clarifications, please contact Bernadette R. Bedis, Senior Education Program Specialist, SGOD HRDS at bernadette.bedis001@deped.gov.ph.
8. Immediate dissemination of and strict compliance with this division memorandum are desired.


JOSE L. DONCILLO, CESO V
Schools Division Superintendent 

Enclosure 1 - List of Participants

NO.	NAME	SCHOOL ID	SCHOOL	MUNICIPALITY
1	FULGAR, SHEREEN MENDOZA	113979	Badang Elementary School	BARCELONA
2	ELLI, DINAH EMBILE	113982	Barcelona Central School	BARCELONA
3	GOB, JOCELYN CAMPOSANO	113982	Barcelona Central School	BARCELONA
4	RAGASA, JUDY CANDANO	113982	Barcelona Central School	BARCELONA
5	JAMISOLA, MARY ANN FERNANDO	113985	Fabrica Elementary School	BARCELONA
6	FIGUEROA, NIDA EVASCO	113989	Olandia Elementary School	BARCELONA
7	FORTE, GREGORY HERMOSA	113989	Olandia Elementary School	BARCELONA
8	GABION, MARIA ROAN CONSIGNA	113991	Putiao Elementary School	BARCELONA
9	ABAINZA, EDITHA EMBERGA	113995	Sta. Cruz Elementary School	BARCELONA
10	TAN, MARIA SALOME ESCULLAR	113995	Sta. Cruz Elementary School	BARCELONA
11	ESTONANTO, NENA ESTOPACE	113996	Sta. Lourdes Elementary School	BARCELONA
12	ESCARCHA, JUDELYN GAYTA	302184	Barcelona National Comprehensive High School	BARCELONA
13	GARCIA, MELVIN CONSULTA	302184	Barcelona National Comprehensive High School	BARCELONA
14	LUSTESTICA, JOHN LABITAG	302184	Barcelona National Comprehensive High School	BARCELONA
15	ROSALES, CECILIA KAREN TALAVERA	302184	Barcelona National Comprehensive High School	BARCELONA
16	FETALVO, ERLINDA EVASCO	302218	Celso F. Falcotelo National High School	BARCELONA
17	FULGOSINO, LEA EVASCO	302218	Celso F. Falcotelo National High School	BARCELONA
18	GACOSTA, LENA GALLEGRO	302218	Celso F. Falcotelo National High School	BARCELONA
19	EJERCITO, NOEL ESTEVES	310009	San Antonio National High School	BARCELONA
20	HILA, MARNELLI FLORESCA	310009	San Antonio National High School	BARCELONA
21	GOSOSO, ROSALIE FOMBUENA	502338	Alegria Integrated School	BARCELONA
22	BREZUELA, ORTENCIA GARLAN	113998	Abad Santos Elementary School	BULAN
23	FEDERICO, RUBY GENETIA	113998	Abad Santos Elementary School	BULAN
24	GERNALE, ELSA GARLAN	113998	Abad Santos Elementary School	BULAN
25	LAZONA, MAILEEN LEGASPI	113998	Abad Santos Elementary School	BULAN
26	DIVINA, CHERRYL PANELO	113999	Antipolo ES	BULAN
27	ADRA, CONCEPCION GOJO	114000	Beguín ES	BULAN
28	ASTILLERO, NELIA CANTUBA	114000	Beguín ES	BULAN
29	BORRAS, MARIA GEMMA REYNES	114000	Beguín ES	BULAN
30	GADIL, AINEZ SO	114000	Beguín ES	BULAN
31	GUAN, REYNOEL GARRATE	114002	Bonifacio ES	BULAN
32	ALBOR, BOBBY SANTIAGO	114003	Bulan North Central School-A	BULAN
33	AZUR, CECILIA GESTIADA	114003	Bulan North Central School-A	BULAN
34	GARILAO, ALBERTO DIMITRIAL	114003	Bulan North Central School-A	BULAN
35	GUETA, MARICAR FEBRERO	114003	Bulan North Central School-A	BULAN
36	HIPOS, EMILIA GENETIA	114003	Bulan North Central School-A	BULAN
37	GOPELA, MALIZ TANADA	114004	Bulan North CS-B	BULAN
38	GUTLAY, ABEL GAYAFRANCA	114004	Bulan North CS-B	BULAN
39	MACANDOG, ROWELLA MISAGAL	114004	Bulan North CS-B	BULAN
40	MAYORES, MANRICO CEMENTE	114004	Bulan North CS-B	BULAN
41	SANCHO, IRENE LEVANTINO	114004	Bulan North CS-B	BULAN
42	SERQUINA, VIVIAN CANO	114004	Bulan North CS-B	BULAN
43	VARGAS, ZAIDA GOYAL	114004	Bulan North CS-B	BULAN
44	ANDES, NORMA GERONA	114006	Cadandanan ES	BULAN
45	BALOLOY, JOSIE SO	114006	Cadandanan ES	BULAN
46	GERANE, GEMMA MORATA	114006	Cadandanan ES	BULAN
47	GLORIANE, GLENDA GERNALE	114010	Daganas ES	BULAN
48	GOJAR, RHEA REGULACION	114010	Daganas ES	BULAN
49	MEJILA, CONCHITA MENCINAS	114010	Daganas ES	BULAN
50	ARENA, MARIA REBECCA ESPERA	114016	Jamorawon ES	BULAN
51	MAYOR, MALYN VILLAREAL	114016	Jamorawon ES	BULAN
52	CERILLO, CZARLONA MARIE SYERAH	114017	Lahong ES	BULAN
53	GIPANAO, NENA LAYCO	114017	Lahong ES	BULAN
54	GUETA, ALICIA MADRONA	114017	Lahong ES	BULAN
55	BAJAMUNDI, CHONA HAPIN	114018	M. A. Roxas ES	BULAN
56	GIME, EMMA JAZMIN	114018	M. A. Roxas ES	BULAN
57	BAJAMONDE, GAY GASID	114021	Namo ES	BULAN

NO.	NAME	SCHOOL ID	SCHOOL	MUNICIPALITY
58	MONTES, MARILYN HAPIN	114021	Namo ES	BULAN
59	OLI, MARIA CRISTINA GRAFIL	114021	Namo ES	BULAN
60	SENOSIN, VICKY BONGALOSA	114021	Namo ES	BULAN
61	BESUSTRINGUE, JANET HIBE	114022	Nasuje ES	BULAN
62	BESUSTRINGUE, ROSHELL HILOMA	114022	Nasuje ES	BULAN
63	NUEVO, AILENE FORTE	114022	Nasuje ES	BULAN
64	AZARES, ELISSA TAN	114023	Padre Diaz ES	BULAN
65	GRAYDA, MICHELLE GEALONE	114023	Padre Diaz ES	BULAN
66	BAUTISTA, LAURA TAGUB	114028	San Juan Bago ES	BULAN
67	GABAYA, MARIVIC BALANA	114028	San Juan Bago ES	BULAN
68	GERERO, SANDY GURAY	114028	San Juan Bago ES	BULAN
69	TALIDANO, CIELO DERI	114030	Somagongsong ES	BULAN
70	BILAN, MIRASOL HILOMA	114031	Sta. Remedios ES	BULAN
71	CATABUENA, MARIA CECILIA G	114031	Sta. Remedios ES	BULAN
72	FURAQUE, LESLIE DEDUQUE	114031	Sta. Remedios ES	BULAN
73	GESTIADA, MARY ANN LABALAN	114031	Sta. Remedios ES	BULAN
74	GURAY, MA. CECILIA PANELO	114031	Sta. Remedios ES	BULAN
75	HUBILLA, SHELLY ANN GOGOLIN	114031	Sta. Remedios ES	BULAN
76	DURAN, QUENNIE SIA	114033	BLISS Elementary School	BULAN
77	TORREGOZA, LIZEL GALLANOSA	114033	BLISS Elementary School	BULAN
78	DELA FUENTE, SHARINE GUARDIAN	114034	Bulan South CS	BULAN
79	DUQUE, LYN SO	114034	Bulan South CS	BULAN
80	GIPIT, ANALYN BENITEZ	114034	Bulan South CS	BULAN
81	GRAYDA, NANETTE GOLPO	114034	Bulan South CS	BULAN
82	GUELAS, VILMA GLORIANE	114034	Bulan South CS	BULAN
83	GUTIERREZ, JENNIFER GOBRES	114034	Bulan South CS	BULAN
84	MORATA, MARY JANE GLINA	114034	Bulan South CS	BULAN
85	TEE, ALLAN GARLAN	114034	Bulan South CS	BULAN
86	BENIG, MINDA ASURTO	114036	Butag ES	BULAN
87	DREU, ALLAN BELMONTE	114036	Butag ES	BULAN
88	ENANO, MYRA ASIA	114036	Butag ES	BULAN
89	GUTLAY, RUBY GADBILAO	114036	Butag ES	BULAN
90	LEBAN, LORELYN CANUEL	114036	Butag ES	BULAN
91	CANTOMAYOR, HELEN GILLEGO	114037	Fabrica Elementary School	BULAN
92	NAVARRO, MYLENE CELADENA	114037	Fabrica Elementary School	BULAN
93	GUELAS, MARIA TERESSA GELUA	114038	G. Del Pilar ES	BULAN
94	GUTLAY, ARLINA ESTRELLA	114038	G. Del Pilar ES	BULAN
95	PORCALLA, RAQUEL GIME	114038	G. Del Pilar ES	BULAN
96	ADALIN, JENELYN DELINA	114042	Marinab ES	BULAN
97	GATACELO, NENITA HOJAS	114042	Marinab ES	BULAN
98	GRACILLA, MARICEL LAZONA	114042	Marinab ES	BULAN
99	BANAGA, MARGIE GISALA	114043	N. Roque ES	BULAN
100	GUETA, ALMA GAUPO	114043	N. Roque ES	BULAN
101	LAZONA, IMELDA BASCO	114043	N. Roque ES	BULAN
102	ZUÑIGA, JEAN AVILA	114043	N. Roque ES	BULAN
103	ADRA, ANA DELLOMAS	114044	Obrero Elementary School	BULAN
104	BENDAÑA, CRISTINE DOLOR	114044	Obrero Elementary School	BULAN
105	BENDAÑA, GIZELLE BUENSOCESO	114044	Obrero Elementary School	BULAN
106	CALLEJA, CYRUS DEDASE	114046	Otavi ES	BULAN
107	CALLEJA, NELIA DEDASE	114046	Otavi ES	BULAN
108	ESPEJON, SALLY DOMINGUEZ	114046	Otavi ES	BULAN
109	GACOSTA, NOVE GLORIANA	114046	Otavi ES	BULAN
110	GARATE, MORIEL ESPEDIDO	114046	Otavi ES	BULAN
111	GEALONE, ROLDAN GUBAN	114046	Otavi ES	BULAN
112	GERERO, TERESITA ALIS	114046	Otavi ES	BULAN
113	LOPEZ, MARIA CINDY CALLEJA	114046	Otavi ES	BULAN
114	ROMO, BELINDA PALACIO	114047	QUEZON ELEMENTARY SCHOOL	BULAN
115	PANTUA, EFREN GUIM	114048	Sagrada ES	BULAN
116	BORABO, MARGARITA DIZON	114049	San Isidro ES	BULAN

NO.	NAME	SCHOOL ID	SCHOOL	MUNICIPALITY
117	DEJUCOS, CECILIA GUELAS	114049	San Isidro ES	BULAN
118	AVENIR, CECILLE CELADENA	114052	San Vicente ES	BULAN
119	DIONEDA, REONE GOJAR	114052	San Vicente ES	BULAN
120	GOLLOSO, RUBY TEE	114052	San Vicente ES	BULAN
121	GOZO, WILFREDO HABITCHUELA	114052	San Vicente ES	BULAN
122	BESUSTRINGUE, ANA LIZA BRIOSO	175001	Alberto de Castro ES	BULAN
123	DELA ROSA, FEMA JAO	175001	Alberto de Castro ES	BULAN
124	GRATIL, ALLAN MORRO	175001	Alberto de Castro ES	BULAN
125	LATOSA, IRISH SANTOS	175001	Alberto de Castro ES	BULAN
126	MOHAMETANO, LYNDON GAUPO	175001	Alberto de Castro ES	BULAN
127	MONTANO, GEMMALYN MADRONA	175001	Alberto de Castro ES	BULAN
128	OBSUM, SALVACION REGIDOR	175001	Alberto de Castro ES	BULAN
129	SERGIO, LYN CELADINIA	175001	Alberto de Castro ES	BULAN
130	SERVANDO, AMELITA GERERO	175001	Alberto de Castro ES	BULAN
131	SOLIS, KOREN GARALDE	175001	Alberto de Castro ES	BULAN
132	TAN, JOSIE ALTAREJOS	175001	Alberto de Castro ES	BULAN
133	DE LOS SANTOS, LENY GUTLAY	175002	Ilawod West Elementary School	BULAN
134	VALE, MELANIE CANO	175002	Ilawod West Elementary School	BULAN
135	ALIPIO, GILBERT GIGANTONE	302190	Bulan National High School	BULAN
136	ADVINCULA, RHEA LO	302190	Bulan National High School	BULAN
137	ALVAREZ, RHIZA VALERIANO	302190	Bulan National High School	BULAN
138	AMANTE, LEA GIMAO	302190	Bulan National High School	BULAN
139	BAILON, MERLE ESCOTA	302190	Bulan National High School	BULAN
140	BENTIC, CHRISTINA GUAÁ'IZO	302190	Bulan National High School	BULAN
141	BOTALON, RENAN DOCOT	302190	Bulan National High School	BULAN
142	CHENG, SIMONETTE BILBAO	302190	Bulan National High School	BULAN
143	CORDIAL, JESUS AUGUSTUS GERONILLA	302190	Bulan National High School	BULAN
144	DEL CASTILLO, LIBERTAD BADAR	302190	Bulan National High School	BULAN
145	DOMASIG, APOLINARIO JR. MANCERA	302190	Bulan National High School	BULAN
146	DURAN, NUECA GUARDA	302190	Bulan National High School	BULAN
147	DURAN, ROGER PERIDA	302190	Bulan National High School	BULAN
148	FURISCAL JR., SILVESTRE CALDERON	302190	Bulan National High School	BULAN
149	FURISCAL, MA ANN GONZALGO	302190	Bulan National High School	BULAN
150	GAMBA, RACHEL AREVALO	302190	Bulan National High School	BULAN
151	GERALDINO, ROMMEL BAJARO	302190	Bulan National High School	BULAN
152	GIDO, MARIDEL SAGRADA	302190	Bulan National High School	BULAN
153	GIDOC, JOSELITO GRATIL	302190	Bulan National High School	BULAN
154	GIGANTONE, SHIRLEY NAVARRO	302190	Bulan National High School	BULAN
155	GLEABO, DANTE GENTOLIA	302190	Bulan National High School	BULAN
156	GOGOLIN, NERA GIRADO	302190	Bulan National High School	BULAN
157	GOJO, MARLYN GRONES	302190	Bulan National High School	BULAN
158	GOLLOSO, JANET YBAÁ'EZ	302190	Bulan National High School	BULAN
159	GOYAL, SHENA ADVINCULA	302190	Bulan National High School	BULAN
160	GRATEJA, JOCINE FULGAR	302190	Bulan National High School	BULAN
161	GROYON, SHALYN BALANA	302190	Bulan National High School	BULAN
162	GUTIERREZ, CESAR HIEBRES	302190	Bulan National High School	BULAN
163	GUTLAY, KAREN BULSECO	302190	Bulan National High School	BULAN
164	HUARDE, MARIA SALVE PLACER	302190	Bulan National High School	BULAN
165	LAGUERAS, CELINNE GLORIANE	302190	Bulan National High School	BULAN
166	LANUZA, MA. LOURDES GENTOLIA	302190	Bulan National High School	BULAN
167	LUZURIAGA, JOSE BRANDON G	302190	Bulan National High School	BULAN
168	MACANDOG, MARTIN ENANO	302190	Bulan National High School	BULAN
169	MERCADO, MIRANEL VARGAS	302190	Bulan National High School	BULAN
170	MILAN, ARISTOTELES DELOS SANTOS	302190	Bulan National High School	BULAN
171	MONFORTE, MARITES MARMOL	302190	Bulan National High School	BULAN
172	MONTICALVO, MYRA CORRO	302190	Bulan National High School	BULAN
173	RAPI, HEZEL GAPAS	302190	Bulan National High School	BULAN
174	REBLORA, LEONORA PANESA	302190	Bulan National High School	BULAN
175	TEJADA, MARK GLENN LUSUEGRO	302190	Bulan National High School	BULAN

NO.	NAME	SCHOOL ID	SCHOOL	MUNICIPALITY
176	BANARES, RODITA GUERRERO	302213	Valentina B. Boncan National High School	BULAN
177	GINETE, NANCY GIPIT	302213	Valentina B. Boncan National High School	BULAN
178	GOTIS, RIZA SORIANO	302213	Valentina B. Boncan National High School	BULAN
179	LACTAO, ERMA BOLAWAN	302213	Valentina B. Boncan National High School	BULAN
180	RAMISO, PIO JR RODRIGUEZ	302233	Quezon National High School	BULAN
181	BALDEO, JOSE ZOREN DEJUMO	302237	San Francisco National High School	BULAN
182	GARLAN, JEANE GUETA	302237	San Francisco National High School	BULAN
183	GERANCO, MARIA CELESTE SALIGO	302237	San Francisco National High School	BULAN
184	GERERO, ROGELIO JR. GENOVA	302237	San Francisco National High School	BULAN
185	GERSALIA, BERNARDO FUENSALIDA	302237	San Francisco National High School	BULAN
186	GRANTOS, LIZA MARASIGAN	302237	San Francisco National High School	BULAN
187	GRIPON, MARIA ANNA BETH DEBLOIS	302237	San Francisco National High School	BULAN
188	DIESTA, NANETTE GOJIT	302238	San Isidro National High School (Bulan)	BULAN
189	DIONELA, MURIEL DOMINGUEZ	302238	San Isidro National High School (Bulan)	BULAN
190	BALBAS, MELIZA GITO	302239	San Juan Bag-o High School	BULAN
191	CAPARINO, MALYNEL ESTENOR	302239	San Juan Bag-o High School	BULAN
192	GUTLAY, JAQUILINE GULLON	310001	Cadandanan National High School	BULAN
193	ROGACION, ALPHA ROSARE	310001	Cadandanan National High School	BULAN
194	AZARES, MIEL GOTLADERA	310002	J. P. Laurel High School	BULAN
195	BAJARO, JOY COLOMBINO	310002	J. P. Laurel High School	BULAN
196	BRIONES, JUVY GESTIADA	310002	J. P. Laurel High School	BULAN
197	HALLIG, MILAGROS GROYON	310002	J. P. Laurel High School	BULAN
198	TRANGIA, GERALD DEMETRIAL	310002	J. P. Laurel High School	BULAN
199	TEBRERO, ANGELA CABUS	502339	Calpi Integrated School	BULAN
200	FUENTES, MARICEL BUENAOBRA	114058	Buhang Elementary School	BULUSAN
201	FUASO, MARY ANNE SUOD	114059	Bulusan CS	BULUSAN
202	FUEDAN JR., NOLI GALLANO	114059	Bulusan CS	BULUSAN
203	FULLEROS, LUZ BLASQUINO	114059	Bulusan CS	BULUSAN
204	HEBRES, MARITES FULO	114059	Bulusan CS	BULUSAN
205	FULLO, AGNES FUENTES	114065	Sabang ES	BULUSAN
206	GALLANO, REBECCA GALPA	114065	Sabang ES	BULUSAN
207	GALPO, ANGELINA ESPAÑO	114065	Sabang ES	BULUSAN
208	BELTRAN, MARGIE ETE	114066	Salvacion ES	BULUSAN
209	GACOSTA, IRENE FUENTES	114067	San Antonio ES	BULUSAN
210	TANIO, MARY JANE FRAYNA	114067	San Antonio ES	BULUSAN
211	AFRICA, SHIELA GABITO	114069	San Francisco ES	BULUSAN
212	GALVE, RICARDO FULO	302188	Buhang National High School	BULUSAN
213	BERNALES, DAX HUBILLA	302192	Bulusan High School	BULUSAN
214	BORJA, ANAVELLA LONGARA	302192	Bulusan High School	BULUSAN
215	DELOS SANTOS, JEAN TAN	302192	Bulusan High School	BULUSAN
216	ENAJE, JOAN MARCOS	302192	Bulusan High School	BULUSAN
217	EVASCO, CHRISTIE CAMPOSANO	302192	Bulusan High School	BULUSAN
218	FURIO, MELINDA GAPAS	302192	Bulusan High School	BULUSAN
219	GABAD, ALLAN GALLEVO	302192	Bulusan High School	BULUSAN
220	GARCIA, REGINO FRANCE	302192	Bulusan High School	BULUSAN
221	FULMINAR, ALEX BARROT	302242	San Roque National High School	BULUSAN
222	LETADA, NENITA CORSIGA	114079	Boton ES	CASIGURAN
223	LAREZA, MARIA CYNTHIA PADO	114081	Cagdawat ES	CASIGURAN
224	DURANA, LORENA HABITAN	114082	Casay ES	CASIGURAN
225	DE JESUS, MARICEL BRINGAS	114083	Casiguran CS	CASIGURAN
226	DINO, GAIL GERONA	114083	Casiguran CS	CASIGURAN
227	ESTAREJA, OHELLO AVILES	114083	Casiguran CS	CASIGURAN
228	HAMOR, CHRISTINA HATOC	114083	Casiguran CS	CASIGURAN
229	HAPIN, MARCIA CAUNCA	114083	Casiguran CS	CASIGURAN
230	HILIS, AZEL BUENAOBRA	114083	Casiguran CS	CASIGURAN
231	LACZA, ZANDRA SICAD	114083	Casiguran CS	CASIGURAN
232	PACHECO, ROWENA RICERO	114083	Casiguran CS	CASIGURAN
233	SAMUYA, LILYBETH ESQUIROS	114083	Casiguran CS	CASIGURAN
234	GRAJO, LOLITA TABAR	114084	Colambis ES	CASIGURAN

NO.	NAME	SCHOOL ID	SCHOOL	MUNICIPALITY
235	GALICIO, ALICIA BESMONTE	114086	Gogon ES	CASIGURAN
236	GRAJO, JENELYN LADIM	114086	Gogon ES	CASIGURAN
237	JAYLO, MARICEL BUENAVIDEZ	114086	Gogon ES	CASIGURAN
238	DESALIZA, MELISSA HABITAN	114087	Inlagadian Elementary School	CASIGURAN
239	MASARATE, LIZA ESTONANTO	114087	Inlagadian Elementary School	CASIGURAN
240	DERIT, DANTE HAGOS	114091	San Antonio ES	CASIGURAN
241	HAYAGAN, IMELDA CAGIWA	114091	San Antonio ES	CASIGURAN
242	ILAGA, MA. CRISTINA DIAZ	114091	San Antonio ES	CASIGURAN
243	RICERO, ELENITA GRAJO	114093	San Juan ES	CASIGURAN
244	BORRES, HAZEL HALCON	114095	Sta. Cruz ES	CASIGURAN
245	HAPIN, MILAGROS ESQUILLO	114098	Trece Martires ES	CASIGURAN
246	BELANDO, MARISSA BROGADA	302197	Casiguran Technical Vocational School	CASIGURAN
247	BELAZON, MARILOU HISARZA	302197	Casiguran Technical Vocational School	CASIGURAN
248	BRIOSO, NESTOR GALICIA	302197	Casiguran Technical Vocational School	CASIGURAN
249	BUNGCAG JR., ANTONIO JAPON	302197	Casiguran Technical Vocational School	CASIGURAN
250	CAAWAY, HILDA OLAYTA	302197	Casiguran Technical Vocational School	CASIGURAN
251	CABALLERA, ROSE ANNE THOMAS	302197	Casiguran Technical Vocational School	CASIGURAN
252	DE RAMON, LEONARDO HAINTO	302197	Casiguran Technical Vocational School	CASIGURAN
253	DUMAPLIN, ANTHONY HAGOS	302197	Casiguran Technical Vocational School	CASIGURAN
254	DUQUE, LOLITO, JR. RAPA	302197	Casiguran Technical Vocational School	CASIGURAN
255	ESTERNON, VIOLETA LESANO	302197	Casiguran Technical Vocational School	CASIGURAN
256	ESTOCADO, JUANCHO ESCARCHA	302197	Casiguran Technical Vocational School	CASIGURAN
257	FRAYNA, MARIA TERESA FARENAS	302197	Casiguran Technical Vocational School	CASIGURAN
258	GARCES, FRANCIA MATUBA	302197	Casiguran Technical Vocational School	CASIGURAN
259	HAJAS, MIGUEL JR. HAVERIA	302197	Casiguran Technical Vocational School	CASIGURAN
260	HAYLAR, FATIMA ENAJE	302197	Casiguran Technical Vocational School	CASIGURAN
261	HUET, NOLI CAMBE	302197	Casiguran Technical Vocational School	CASIGURAN
262	JALMASCO, LEO BALAORO	302197	Casiguran Technical Vocational School	CASIGURAN
263	JANER, RIZZA BRIONES	302197	Casiguran Technical Vocational School	CASIGURAN
264	LACZA, MAREL ABOTANATIN	302197	Casiguran Technical Vocational School	CASIGURAN
265	LAGAMAYO, RENE BARTOLATA	302197	Casiguran Technical Vocational School	CASIGURAN
266	LANUZA, ALMA JAYLO	302197	Casiguran Technical Vocational School	CASIGURAN
267	MENDOZA, JEFFERSON DE VILLA	302197	Casiguran Technical Vocational School	CASIGURAN
268	MOROS, ELMER NUYLES	302197	Casiguran Technical Vocational School	CASIGURAN
269	PAREJA, MINETTE ABOTANATIN	302197	Casiguran Technical Vocational School	CASIGURAN
270	TALABUCON, ROSELLE GALOS	302197	Casiguran Technical Vocational School	CASIGURAN
271	VERGARA, MARLYN VALIN	302197	Casiguran Technical Vocational School	CASIGURAN
272	ANAGON, DAISY HISARZA	302240	San Juan National High School	CASIGURAN
273	AYO, AGNES GALAN	302240	San Juan National High School	CASIGURAN
274	DUQUE, MARITES HALOC	302240	San Juan National High School	CASIGURAN
275	HACHERO, MARINA DIO	302240	San Juan National High School	CASIGURAN
276	JAO, ANNA MARIE ALCAZAR	302240	San Juan National High School	CASIGURAN
277	JAYNARIO, RIZALINE CALOLOT	302240	San Juan National High School	CASIGURAN
278	LLABORE, MA. IMELDA HAPAL	302240	San Juan National High School	CASIGURAN
279	BONIFACIO, AIREN TANA	114099	Bagalayag ES	CASTILLA
280	DAGNALAN, MA. SYLVIA TALAVERA	114099	Bagalayag ES	CASTILLA
281	ESTUARIA, MA. HAZEL HERMIDA	114099	Bagalayag ES	CASTILLA
282	VALLADOLID, GLENDA LAREZA	114099	Bagalayag ES	CASTILLA
283	CAMACHO, AGAPITA BONGAO	114100	Bagong Sirang ES	CASTILLA
284	DESONIA, MA. MURIEL DE LEON	114100	Bagong Sirang ES	CASTILLA
285	MARIGONDON, JULIET EREVE	114100	Bagong Sirang ES	CASTILLA
286	ENMEL, MARAH APRIL JANE LEVANTINO	114102	Castilla East CS	CASTILLA
287	FAELDEN, MICHELLE BONETE	114102	Castilla East CS	CASTILLA
288	LAURINARIA, REALYN ALIPIO	114102	Castilla East CS	CASTILLA
289	SEVILLA, ULETA PAREJA	114102	Castilla East CS	CASTILLA
290	DEOCAREZA, ASUNCION LEGASPI	114105	Dulangan Elementary School	CASTILLA
291	DAGNALAN, MARIAN NACE	114106	La Union ES	CASTILLA
292	DOROJA, DAISY BUENAOBRA	114106	La Union ES	CASTILLA
293	CALAYO, AMELIA FRAYNA	114107	Libtong Elementary School	CASTILLA

NO.	NAME	SCHOOL ID	SCHOOL	MUNICIPALITY
294	MARAÑANA, CHONA MAGDATO	114107	Libtong Elementary School	CASTILLA
295	MENDEZ, GIRLIE DIESTA	114108	Maracabac ES	CASTILLA
296	EBDANI, AGNES DARIA	114109	Milagrosa Elementary School	CASTILLA
297	JALMASCO, ROMMEL PADO	114109	Milagrosa Elementary School	CASTILLA
298	GREFALDA, MA. GRACE AURELIO	114110	Monte Carmelo ES	CASTILLA
299	LABAN, MILDRED BITANCUR	114110	Monte Carmelo ES	CASTILLA
300	MASARATE, EZIL ESCRIBANO	114110	Monte Carmelo ES	CASTILLA
301	GABIONZA, MARIPE JAPON	114111	Oras Elementary School	CASTILLA
302	VILLANUEVA, ROSANA ALCERA	114111	Oras Elementary School	CASTILLA
303	BUENO JR., RODOLFO MONTA?EZ	114112	Pandan ES	CASTILLA
304	CADAG, JOVEN LAYVA	114112	Pandan ES	CASTILLA
305	ACUNA, MARIVIC DELANA	114114	San Isidro ES	CASTILLA
306	AGUIRRE, MILA CATALAN	114114	San Isidro ES	CASTILLA
307	BUBAN, ARMIE GIGANTE	114114	San Isidro ES	CASTILLA
308	GABION, JUVY DELOS SANTOS	114114	San Isidro ES	CASTILLA
309	JANORAS, MAYONA CAPCO	114114	San Isidro ES	CASTILLA
310	LLAMERA, MARIA CECILIA CRUZ	114114	San Isidro ES	CASTILLA
311	PENA, MARLENE CANUEL	114114	San Isidro ES	CASTILLA
312	QUIROGA, SANDRA DESUNIA	114114	San Isidro ES	CASTILLA
313	DATO, FERNANDO LAYON	114115	San Rafael ES	CASTILLA
314	DATO, GLORIA LAYON	114115	San Rafael ES	CASTILLA
315	HERRERA, CARIDAD MELANIS	114115	San Rafael ES	CASTILLA
316	JALMASCO, VENALYN DICHOSO	114115	San Rafael ES	CASTILLA
317	JESORO, GINA CARRASCAL	114115	San Rafael ES	CASTILLA
318	RELLAMA, JESICA DATUR	114115	San Rafael ES	CASTILLA
319	SOLANO, VINCENT LOWEEN LLANETA	114115	San Rafael ES	CASTILLA
320	DADIVAS, GRACE ALADA	114116	Tomalaytay ES	CASTILLA
321	MENDAZA, LEIZLE MONTAS	114117	Amomonting ES	CASTILLA
322	LUMBAO, LIZA MAPA	114118	Buenavista ES	CASTILLA
323	MARCO, SUSANA MARGELINO	114118	Buenavista ES	CASTILLA
324	NUÑEZ, ROSEMARIE AREVALO	114118	Buenavista ES	CASTILLA
325	RAMOS, MARY JO TRIÁ'ANES	114119	Burabod Elementary School	CASTILLA
326	ARAO, ARMENIO MARGALLO	114121	Canjela ES	CASTILLA
327	ARIMADO, INA BALISNOMO	114122	Cumadcad CS	CASTILLA
328	MATIAS, EVANGELINE LLORERA	114122	Cumadcad CS	CASTILLA
329	BUENAOBRA, EVA MAJAN	114123	Dinapa ES	CASTILLA
330	GARAN, JOAN ALANO	114123	Dinapa ES	CASTILLA
331	LORICA, MARILOU LORICA	114123	Dinapa ES	CASTILLA
332	MANGA, ROSIE BERNARTE	114123	Dinapa ES	CASTILLA
333	MARFIL, RUBY AGRIPA	114123	Dinapa ES	CASTILLA
334	SALVOSA, MICHELLE MARAVILLA	114123	Dinapa ES	CASTILLA
335	LLANILLO, RICHELLE AREVALO	114124	Loreto ES	CASTILLA
336	LLENAS, JOVALYN CABRIA	114124	Loreto ES	CASTILLA
337	ABARETA, JOCELYN BATAS	114125	Macalaya ES	CASTILLA
338	BONGOS, MABEL LATUGA	114125	Macalaya ES	CASTILLA
339	CAMPILLOS, JIDELYN LLOSALA	114125	Macalaya ES	CASTILLA
340	DIG, RUBY LYNN AJERO	114125	Macalaya ES	CASTILLA
341	DOPLOSO, CYNTHIA ZAMORA	114125	Macalaya ES	CASTILLA
342	ENOVEJAS, JAYCIL MADRIGALEJOS	114125	Macalaya ES	CASTILLA
343	JANABAN, OSCAR JEBULAN	114125	Macalaya ES	CASTILLA
344	MONFORTE, EMELITA LOZANO	114125	Macalaya ES	CASTILLA
345	PIANA, MA. ANA SINCUA	114125	Macalaya ES	CASTILLA
346	ZAMORA, ELSA LOPEZ	114125	Macalaya ES	CASTILLA
347	MEDIANA, IRENE LAURINARIA	114126	Mayon ES	CASTILLA
348	GUARTE, CANDY FEDERIO	114129	Misalay ES	CASTILLA
349	SANTONIA, DELILAH ALMOJUELA	114129	Misalay ES	CASTILLA
350	ABRERA, CHERIL LLANDELAR	114131	Rosal ES	CASTILLA
351	ANDES, ALICE ALCANTARA	114131	Rosal ES	CASTILLA
352	EMBILE, MARIA EDNA BRECIA	114131	Rosal ES	CASTILLA

NO.	NAME	SCHOOL ID	SCHOOL	MUNICIPALITY
353	ORGASAN, JHERGEL LLADONES	114132	Salvacion ES	CASTILLA
354	ALIVEN, MYLIN DARO	114134	San Vicente ES	CASTILLA
355	MANDIA, MELROSE MACASINAG	114134	San Vicente ES	CASTILLA
356	JESALVA, LYRA MAGALLON	114135	Sogoy ES	CASTILLA
357	JEBULAN, RUBYLINDA CASTILLO	302198	Castilla National High School	CASTILLA
358	MANGAMPO, DEONIE JINTALAN	302198	Castilla National High School	CASTILLA
359	ORTIZ, SALVACION DESAMPARO	302198	Castilla National High School	CASTILLA
360	ALAMO, LILIBETH AGUILAR	302201	Cumadcad National High School	CASTILLA
361	ALO, IMELDA NEPOMUCENO	302201	Cumadcad National High School	CASTILLA
362	ANDES, MA.GRACIA OANZON	302201	Cumadcad National High School	CASTILLA
363	BAGAGNAN, ERIC AZUPARDO	302201	Cumadcad National High School	CASTILLA
364	BAHOY, MARY JANE LLONA	302201	Cumadcad National High School	CASTILLA
365	BASILLA, MA. ROSAL ROCIO	302201	Cumadcad National High School	CASTILLA
366	DELLOSA, RONNEL LAURINARIA	302201	Cumadcad National High School	CASTILLA
367	DIONEDA, ELISA GLADYS ANDES	302201	Cumadcad National High School	CASTILLA
368	FELISMONTE, LORNA ENCINARES	302201	Cumadcad National High School	CASTILLA
369	GAMIS, ARLENE BRIOSO	302201	Cumadcad National High School	CASTILLA
370	JINTALAN, LANI ARIOLA	302201	Cumadcad National High School	CASTILLA
371	LAFUENTE, NOEL LACDANG	302201	Cumadcad National High School	CASTILLA
372	MIRANDILLA, MARJORIE DARO	302201	Cumadcad National High School	CASTILLA
373	PAGAO, MERLY DICHOSO	302201	Cumadcad National High School	CASTILLA
374	BENASA, MYLENE CORTEZANO	302202	Dinapa National High School	CASTILLA
375	DOLOSA, LARRY MARAÁ'O	302202	Dinapa National High School	CASTILLA
376	DOMASIG, TESSA DALDE	302202	Dinapa National High School	CASTILLA
377	MADRIAGA, JULA APUYAN	302202	Dinapa National High School	CASTILLA
378	GRABADOR, SHEBA ZAMORA	302219	Macalaya NHS	CASTILLA
379	LASONA, EDITHA LOANA	302219	Macalaya NHS	CASTILLA
380	LIMENA, DORIS JANE MADRIDEO	302219	Macalaya NHS	CASTILLA
381	ABORDO, CRISALDE ALEJO	302226	Mayon National High School	CASTILLA
382	ABORDO, JOANNE PHOBELYN GRANADILL	302226	Mayon National High School	CASTILLA
383	DELLOSA, GENOVEVA DOCTOR	302228	Oras National High School	CASTILLA
384	DIESTA, LUCIA SUMAYLO	302228	Oras National High School	CASTILLA
385	LOTINO, HAYNE LLAMES	302228	Oras National High School	CASTILLA
386	MADRIDEO, MARILOU LEVANTINO	302241	San Rafael High School, Castilla	CASTILLA
387	MANANES, ZUSI BANIA	302241	San Rafael High School, Castilla	CASTILLA
388	MOLINA, RONA BIOLENA	302241	San Rafael High School, Castilla	CASTILLA
389	NG, ISIDORA DESTAJO	302241	San Rafael High School, Castilla	CASTILLA
390	PATRIA, MARY ANN DUCTA	302241	San Rafael High School, Castilla	CASTILLA
391	PESONILA, DON VELASCO	302241	San Rafael High School, Castilla	CASTILLA
392	LAZAR, MA. RUTH REBUENO	310004	Pandan High School	CASTILLA
393	MARAVILLA, CARMELA LATAP	310004	Pandan High School	CASTILLA
394	BENASA, BABY ANN MARAVILLA	502288	Quirapi Integrated School	CASTILLA
395	MARAVILLA, CARMEN GRAJO	502288	Quirapi Integrated School	CASTILLA
396	MACANDOG, IRENE LISAY	114138	Banban ES	DONSOL
397	MANCERA, KEITH CATHLEEN ESCOLTURA	114139	Banuang-Gurang ES	DONSOL
398	MAQUINANA, CHUSEN BATALLA	114139	Banuang-Gurang ES	DONSOL
399	SIDON, ROSARIO HERRERA	114141	Bayawas ES	DONSOL
400	QUIRONA, JULIE JANE DOLOSA	114143	De Vera ES	DONSOL
401	ARCANGEL, MARY ANN OCSINA	114144	Donsol East CS	DONSOL
402	PAMINTUAN, SHARON PASIBE	114144	Donsol East CS	DONSOL
403	DOMETITA, JEANETTE ASUSANO	114144	Donsol East CS	DONSOL
404	GARCIA, NORLITO MALLORCA	114144	Donsol East CS	DONSOL
405	GO, DOLORES GUADAMOR	114144	Donsol East CS	DONSOL
406	LUNA, IMELDA PRESILLAS	114144	Donsol East CS	DONSOL
407	AQUINO, MA. ANA MANAGO	114146	Gura Elementary School	DONSOL
408	LOZANO, MARIFE LOSITO	114147	Mabini ES	DONSOL
409	BUGAYON, LUCYLEN TRINANES	114149	Ogod Elementary School	DONSOL
410	MORCILLA, MARIFE CADAG	114149	Ogod Elementary School	DONSOL
411	BELMONTE, LALAINE ALIM	114150	Rawis Elementary School	DONSOL

NO.	NAME	SCHOOL ID	SCHOOL	MUNICIPALITY
412	BRIONES, ROSALINDO, JR MIRANDA	114150	Rawis Elementary School	DONSOL
413	GORORDO, PRISCILLA QUIAZON	114150	Rawis Elementary School	DONSOL
414	MUSA, CHITA CHAVEZ	114151	San Antonio ES	DONSOL
415	SEMINIANO, NEIL PERETE	114152	San Isidro ES	DONSOL
416	LOSITO, YOLANDA CABUGOS	114153	San Ramon ES	DONSOL
417	ENCINAS, JAY-R CADAG	114154	San Vicente ES	DONSOL
418	ARIOLA, RAISA CATUBIG	114155	Sevilla ES	DONSOL
419	SABALBORO, ANNELYN SY	114156	Tongdol ES	DONSOL
420	BAULA, JOLLY LORILLA	114157	Tres Maria ES	DONSOL
421	TRESTIZA, MIA GREBIALDE	114157	Tres Maria ES	DONSOL
422	BAGAGNAN, JOCEIL CADAG	114159	Cabugao ES	DONSOL
423	MANO, ROSHIEL MADRONA	114159	Cabugao ES	DONSOL
424	PALLES, IRISH IRVENE MONTILLA	114160	Dancalan ES	DONSOL
425	PONTACAÑA, REBECCA CADAG	114160	Dancalan ES	DONSOL
426	ABORDO, ANNALIZA HERNANDEZ	114161	Donsol West CS	DONSOL
427	ALIM, MARISOL ALMIÁ'ANA	114161	Donsol West CS	DONSOL
428	DIONISIO, EVIVIAN AYSON	114161	Donsol West CS	DONSOL
429	LAGUNA, CRISHEL ABORDO	114162	Gimagaan ES	DONSOL
430	OFRACIO, MARITES MARBELLA	114166	Malapoc ES	DONSOL
431	GUBOT, JANET NAÑANO	114167	Malinao ES	DONSOL
432	FARENAS, RUCEL LAGATA	114169	Orange ES	DONSOL
433	MOSCOZO, SHIREL MADRONA	114174	San Francisco ES	DONSOL
434	DE BORJA, RICARDO LORESTO	114176	San Rafael ES	DONSOL
435	ROVELO, MERIAM NICERIO	114176	San Rafael ES	DONSOL
436	VALENZUELA, EVELYN CONCEPCION	114176	San Rafael ES	DONSOL
437	JANORAS, NANCY MAGDAMIT	114177	Sibago Elementary School	DONSOL
438	MELITANTE, MELISSA LICSAN	114177	Sibago Elementary School	DONSOL
439	OROPEZA, SUSAN OPIANA	114177	Sibago Elementary School	DONSOL
440	OROSCO, SANDRO AQUINO	114177	Sibago Elementary School	DONSOL
441	ORTICO, NANCY ALIM	114177	Sibago Elementary School	DONSOL
442	TRINIDAD, MA. ROSELLE BRIONES	114177	Sibago Elementary School	DONSOL
443	AVISADO, MARIVIC RADORES	114178	Suguian ES	DONSOL
444	ABLITER, IMELDA VILLAMOR	114179	Sta. Cruz ES	DONSOL
445	ATIZADO, HAYNE ALCANTARA	114179	Sta. Cruz ES	DONSOL
446	HIBAN, FEDERITO ATRACTIVO	114179	Sta. Cruz ES	DONSOL
447	JERESANO, CHERRY MELITANTE	114179	Sta. Cruz ES	DONSOL
448	NASOL, MARY JEAN PALIMA	114179	Sta. Cruz ES	DONSOL
449	PALIMA, LOURDES ABRANTES	114179	Sta. Cruz ES	DONSOL
450	ABARETA, ARLENE AVILA	114180	Tagbac ES	DONSOL
451	CLEMENTE, LEA NIMO	114180	Tagbac ES	DONSOL
452	JACINTO, GLENNES ABLITER	114181	Tinanogan ES	DONSOL
453	MONZALES, REJANAH FRANCIA SANTOS	114181	Tinanogan ES	DONSOL
454	ABARIENTOS, EFREN ARDALES	114183	Vinisitahan ES	DONSOL
455	ARELLANO, AURORA DELMONTE	114183	Vinisitahan ES	DONSOL
456	AVISADO, DITAS DE BORJA	114183	Vinisitahan ES	DONSOL
457	HERNANDEZ, MARIA OLGA ROARING	114183	Vinisitahan ES	DONSOL
458	DACILLO, JAMELY CATUBIG	302204	Donsol National Comprehensive High School	DONSOL
459	ACUÑA, CHERRY CADAG	302204	Donsol National Comprehensive High School	DONSOL
460	AGUSTIN, MYRNA SEMINIANO	302204	Donsol National Comprehensive High School	DONSOL
461	BORONDIA, LENI AQUINO	302204	Donsol National Comprehensive High School	DONSOL
462	GALOSO, GINA ALVARADO	302204	Donsol National Comprehensive High School	DONSOL
463	MAGTARAYO, ERMA GOMEZ	302204	Donsol National Comprehensive High School	DONSOL
464	MARBELLA, MA. CYRILL AREVALO	302204	Donsol National Comprehensive High School	DONSOL
465	MERCIALES, DARLENE CADAG	302204	Donsol National Comprehensive High School	DONSOL
466	MIRABUENO, MELINDA LUNA	302204	Donsol National Comprehensive High School	DONSOL
467	OMBAO, MA. ANGELIQUE ABRANTES	302204	Donsol National Comprehensive High School	DONSOL
468	BOMBASE, JOAN MANDANE	302205	Banuang Gurang National High School	DONSOL
469	MORCILLA, LUZVIMINDA MALAQUINO	302205	Banuang Gurang National High School	DONSOL
470	TRIÑANES, VONIVAR GERILLA	302205	Banuang Gurang National High School	DONSOL

NO.	NAME	SCHOOL ID	SCHOOL	MUNICIPALITY
471	ADRADOS, JAY CATUBIG	302206	Sta. Cruz National High School	DONSOL
472	LEONARDO, TERESITA CADAG	302206	Sta. Cruz National High School	DONSOL
473	PACHECO, HAZEL CADAG	302206	Sta. Cruz National High School	DONSOL
474	TOLOSA, FRANCIS MARIA LOPEZ	302206	Sta. Cruz National High School	DONSOL
475	AREVALO, RICHARD, JR. CADAG	302207	Donsol Vocational High School	DONSOL
476	LOMA, JONATHAN BYRON HUBILLA	302207	Donsol Vocational High School	DONSOL
477	RAZO, ABIGAIL ABITRIA	302207	Donsol Vocational High School	DONSOL
478	ALMARIO, T-I, LINELL AVES	302208	Donsol Vocational High School - Gimagaan	DONSOL
479	AREVALO, T-I, MARI FE ALCANTARA	302208	Donsol Vocational High School - Gimagaan	DONSOL
480	AVISADO, T-I, LOWIE AVISO	302208	Donsol Vocational High School - Gimagaan	DONSOL
481	BAÑAL, T- I, CECILE ALVARADO	302208	Donsol Vocational High School - Gimagaan	DONSOL
482	RIETA, T- I, VENUS CATALINA ARMEDILLA	302208	Donsol Vocational High School - Gimagaan	DONSOL
483	ENCINARES, MARIANNE CHAVEZ	114184	Aguinaldo ES	GUBAT
484	ERENO, IMELDA GONZALES	114184	Aguinaldo ES	GUBAT
485	ESTANOL, JOCELYN ACUNA	114184	Aguinaldo ES	GUBAT
486	JAYMALIN, CYNTHIA ESPIGOL	114184	Aguinaldo ES	GUBAT
487	JAYMALIN, NELSON LABAYANDYO	114184	Aguinaldo ES	GUBAT
488	ERESMAS, SALVACION FEOLINO	114185	Bagacay ES	GUBAT
489	FALCOTELO, ROSELLIE DY	114185	Bagacay ES	GUBAT
490	JAMASCO, MARIBEL JASPELA	114185	Bagacay ES	GUBAT
491	JAO, GEMMA HERRERA	114185	Bagacay ES	GUBAT
492	JEBULAN, LUZ ESPLANA	114185	Bagacay ES	GUBAT
493	BARISO, EMELITA BAITAN	114186	Beriran ES	GUBAT
494	PURA, RHEO ENCINARES	114187	Bonifacio ES	GUBAT
495	ESCASINAS, PATRIA LUSTESTICA	114190	Cogon ES	GUBAT
496	ESCUREL, MARCIA ROCHA	114190	Cogon ES	GUBAT
497	BEN, LIEZL MAGDAMIT	114192	Gubat North CS	GUBAT
498	DOMDOM, CECILIA ESPEDIDO	114192	Gubat North CS	GUBAT
499	EPINO, ROCHELLE BALBUENA	114192	Gubat North CS	GUBAT
500	ESCANDOR, FLORDELIZA ANTOLIN	114192	Gubat North CS	GUBAT
501	ESCASINAS, CARINA DIO	114192	Gubat North CS	GUBAT
502	ESTIPONA, VANILLE CASTILLO	114192	Gubat North CS	GUBAT
503	FARENAS, ANATOLIO ESSLER	114192	Gubat North CS	GUBAT
504	LAGUERTA, MA. LUISA FARENAS	114192	Gubat North CS	GUBAT
505	MIRANDA, THELMA ESMEÑANA	114192	Gubat North CS	GUBAT
506	RODRIGUEZ, TIRSO RICO DOLOT	114192	Gubat North CS	GUBAT
507	CALDERON, MARIA JOHANNA ERVAS	114195	Nato ES	GUBAT
508	ANTES, JUDY FUASO	114196	Ogao ES	GUBAT
509	ESTONANTO, GRACE MARCAIDA	114196	Ogao ES	GUBAT
510	FAJARDO, AGNES ESPALLARDO	114196	Ogao ES	GUBAT
511	HERNANDEZ, HENRY GALLENITO	114196	Ogao ES	GUBAT
512	JERUSALEM, MARICEL PAZ DONGABAN	114196	Ogao ES	GUBAT
513	LORICA, ELVIE ESPENOCILLA	114196	Ogao ES	GUBAT
514	GATDULA, CHERRYL ESTARAS	114198	Patag ES	GUBAT
515	ORTEZA, MYRA ESTAREJA	114199	Payawin ES	GUBAT
516	BILLONES, CIELO MARY	114200	San Ignacio Elementary School	GUBAT
517	LAURETA, HEIDE ENAJE	114200	San Ignacio Elementary School	GUBAT
518	LELIS, LILIBETH ESPINEDA	114200	San Ignacio Elementary School	GUBAT
519	BULAWAN, JUDITH HIGANTO	114201	Tagaytay Elementary School	GUBAT
520	ENTICO, TERESA EBIO	114202	Tiris ES	GUBAT
521	ESPERANZATE, MYLENE FERRERAS	114202	Tiris ES	GUBAT
522	ESQUIERRA, EMMA FUNTANAR	114202	Tiris ES	GUBAT
523	FERRERAS, EDNA LAGONOY	114202	Tiris ES	GUBAT
524	REYES, JOAN FUNTANARES	114202	Tiris ES	GUBAT
525	ERCILLA, CYRIL ERMINO	114205	Bentuco ES	GUBAT
526	ESCOLANO, RHODA ENCINAS	114205	Bentuco ES	GUBAT
527	ESTORNINOS, GRETCHEN DEL PRADO	114205	Bentuco ES	GUBAT
528	ESCANDOR, ANNIE GRACE ENDONELA	114206	Bongsaran ES	GUBAT
529	ESSLER, MARIVIC ESCUETA	114206	Bongsaran ES	GUBAT

NO.	NAME	SCHOOL ID	SCHOOL	MUNICIPALITY
530	ESPINOL, LEA FERRERAS	114206	Bongsaran ES	GUBAT
531	ESTILLER, LEAH ESCANDOR	114206	Bongsaran ES	GUBAT
532	EREVE, MARIA BELINDA FELLONE	114208	Bulacao ES	GUBAT
533	QUIÑONES, ROSALINDA GUTAY	114208	Bulacao ES	GUBAT
534	YU, ROWENA ARNALDO	114208	Bulacao ES	GUBAT
535	ESCANDOR, IMELDA FORTEZA	114211	Gubat South CS	GUBAT
536	FAJARDO, IMELDA ESCANILLA	114211	Gubat South CS	GUBAT
537	ROMASANTA, SHERYL EPINO	114211	Gubat South CS	GUBAT
538	ARBOLENTE, ALEXANDER CARABIT	114212	Manapao ES	GUBAT
539	CARANDANG, SHERYL GARCIA	114212	Manapao ES	GUBAT
540	ENORME, ROSALIE PADRIQUE	114212	Manapao ES	GUBAT
541	BARRUGA, JONATHAN LABOR	114214	Nazareno ES	GUBAT
542	LABRADOR, MERLIE ERESTAIN	114214	Nazareno ES	GUBAT
543	BARRUGA, VIVIAN ESPENA	114215	Rizat ES	GUBAT
544	LELIS, AVEGAIL ESSLER	114218	Tabi ES	GUBAT
545	NAVALTA, CHERRY KAREN EMBILE	114218	Tabi ES	GUBAT
546	ENCINARES, ROSARIO ERVAS	114219	Tigkiw ES	GUBAT
547	ENCINAS, RONELA ESQUIVIAS	114219	Tigkiw ES	GUBAT
548	ENCINARES, MERLIN FERRERAS	114220	Togawe ES	GUBAT
549	ESPANO, LEA ESPENIDA	114220	Togawe ES	GUBAT
550	FRANDO, MELODY OLQUINO	114220	Togawe ES	GUBAT
551	ESPENA, ARLETTE BAGASALA	114221	Union ES	GUBAT
552	MILLENA, KRISTINE FERANDO	114222	Villareal ES	GUBAT
553	BONITE, GINA FORTEZA	302182	Bagacay National High School	GUBAT
554	DIO, LORELEI SUALOG	302182	Bagacay National High School	GUBAT
555	ESCANDOR, ACELA QUINONES	302182	Bagacay National High School	GUBAT
556	ESCOPETE, RICHARD LAJOTA	302182	Bagacay National High School	GUBAT
557	ESPALDON, RIALYN ESCOBER	302182	Bagacay National High School	GUBAT
558	MIÑON, NERISSA CAMAR	302182	Bagacay National High School	GUBAT
559	PADRIQUE, BLESSIE GARBIDA	302182	Bagacay National High School	GUBAT
560	PURA, MA. IRENE EREVE	302182	Bagacay National High School	GUBAT
561	BESID, ELIZABETH ESPENA	302185	Bentuco National High School	GUBAT
562	ENCINARES, RICO ESTIGOY	302185	Bentuco National High School	GUBAT
563	ESPADILLA, RAMMER EPINO	302185	Bentuco National High School	GUBAT
564	FABILANE, DANILO ESPAYOS	302185	Bentuco National High School	GUBAT
565	GALPO, MARIA LUISA ESTREMERA	302185	Bentuco National High School	GUBAT
566	OFALSA, LIEZL ERENO	302185	Bentuco National High School	GUBAT
567	YUZON, JUVY FAJARDO	302189	Bulacao National High School	GUBAT
568	ARAGON, SALVACION GALOSO	302214	Gubat National High School	GUBAT
569	ASIADO, CHARLIE HITTA	302214	Gubat National High School	GUBAT
570	BULURAN, SARA EM	302214	Gubat National High School	GUBAT
571	DETERALA, RENATO CORCUERA	302214	Gubat National High School	GUBAT
572	ENAJE, MA. VIRNA VIDAL	302214	Gubat National High School	GUBAT
573	ENDRACA, GIGI GABUYO	302214	Gubat National High School	GUBAT
574	ENORME, AGNES HIDEA	302214	Gubat National High School	GUBAT
575	ERESMAS, GIL JR. DOMASIG	302214	Gubat National High School	GUBAT
576	ERGINA, JOCYLYN DE VILLA	302214	Gubat National High School	GUBAT
577	ESCANDOR, EMILY ESPEDIDO	302214	Gubat National High School	GUBAT
578	ESCANILLA, FIDELA DELLOMAS	302214	Gubat National High School	GUBAT
579	ESCOBER, LOURDES CHIAO	302214	Gubat National High School	GUBAT
580	ESCOLANO, MARIA ELENA ESTRELLA	302214	Gubat National High School	GUBAT
581	ESTEVEZ, DOMINGO GRANADO	302214	Gubat National High School	GUBAT
582	ESTIPONA, ROWENA LABAN	302214	Gubat National High School	GUBAT
583	ESTIPONA, SALVADOR JR HUBILLA	302214	Gubat National High School	GUBAT
584	ESTOPACE, NATHANIEL ESTOPACE	302214	Gubat National High School	GUBAT
585	FELICIA, OFELIA ESPENANA	302214	Gubat National High School	GUBAT
586	FUELLAS, WILLIAM JR. SABAS	302214	Gubat National High School	GUBAT
587	HAPA, JOAN ESTEVES	302214	Gubat National High School	GUBAT
588	HOMO, MARLITO BRIONES	302214	Gubat National High School	GUBAT

NO.	NAME	SCHOOL ID	SCHOOL	MUNICIPALITY
589	HUBILLA, LEO JASARENO	302214	Gubat National High School	GUBAT
590	JERUSALEM, JORDAN DONGABAN	302214	Gubat National High School	GUBAT
591	JIMENEZ, JEFFREY LUDOVIC	302214	Gubat National High School	GUBAT
592	ORFANEL, MARICEL MANALO	302214	Gubat National High School	GUBAT
593	PORCALLA, LYNNAN ESCUREL	302214	Gubat National High School	GUBAT
594	PURA, MICHAEL DIONELA	302214	Gubat National High School	GUBAT
595	STO. DOMINGO, MYLA VILLARROYA	302214	Gubat National High School	GUBAT
596	DAVID, VIRGINIA GLORIANA	302234	Rizal National High School - Gubat	GUBAT
597	ESPAÑO, NANCY BAGASALA	302234	Rizal National High School - Gubat	GUBAT
598	ESPINOLA, FE ESTREMER	302234	Rizal National High School - Gubat	GUBAT
599	ENALPE, JESSIE DERI	302235	Jupi National High School	GUBAT
600	ESCANDOR, LARA ESPENIDA	302235	Jupi National High School	GUBAT
601	FUELLAS, NESCEL LAGONOY	302235	Jupi National High School	GUBAT
602	BALLESTER, JR, ERNESTO PLAZO	114225	Bolos ES	IROSIN
603	PALENCIA JR., VICENTE CANARIA	114227	Bulawan ES	IROSIN
604	GUATNO, JESSICA VALENZONA	114231	Cogon ES	IROSIN
605	GOMEZ, RUBY HALNIN	114232	Gabao Elementary School	IROSIN
606	MALANG, ARLENE BARAQUIEL	114232	Gabao Elementary School	IROSIN
607	FRIVALDO, INES BARCELONA	114233	Gulang-Gulang ES	IROSIN
608	OROZCO, MARIA CHONA JOLO	114233	Gulang-Gulang ES	IROSIN
609	ESCAMÉ, LUCILLE GABIONZA	114235	Irosin Central School	IROSIN
610	ASTILLERO, DOLORES BUENAFLO	114235	Irosin Central School	IROSIN
611	DOLOSA, AGNES HUGO	114235	Irosin Central School	IROSIN
612	DOMINO, TERESITA GABION	114235	Irosin Central School	IROSIN
613	FULLER, FLORDELIZA FRANCISCO	114235	Irosin Central School	IROSIN
614	GABIONZA, DAISY DERIT	114235	Irosin Central School	IROSIN
615	REALO, MARIANNE ZAMORA	114235	Irosin Central School	IROSIN
616	URBANO, ROWENA GUAMOS	114235	Irosin Central School	IROSIN
617	BORRAL, ROLANDO GARCERA	114239	Monbon ES	IROSIN
618	DERI, MARJORIE MORTEGA	114239	Monbon ES	IROSIN
619	ELEGADO, CHERELYN HAMOR	114239	Monbon ES	IROSIN
620	LOPERA, JEAN ANGELES	114239	Monbon ES	IROSIN
621	TAPALLA, ALMA GINA GILE	114239	Monbon ES	IROSIN
622	CABALLERO, IRMA DINO	114242	San Isidro ES	IROSIN
623	OLIVEROS, AILEEN FURING	114242	San Isidro ES	IROSIN
624	FORTUNO, JENNYLYN GALPA	114244	Tabon-Tabon ES	IROSIN
625	LABILABI, DIANE JANE ASTILLERO	114246	Tongdol ES	IROSIN
626	PADURA, MARIA FE ESQUETA	114246	Tongdol ES	IROSIN
627	PRIELA, MYLENE HALNIN	114246	Tongdol ES	IROSIN
628	CASTILLO, DEXTER ADMINDILLA	114247	Tulay Elementary School	IROSIN
629	DEOCAREZA, MINERVA BALLETA	114249	San Agustin Elementary School	IROSIN
630	DITAN, SENECA BALMEO	114249	San Agustin Elementary School	IROSIN
631	FUNA, JOCELYN EVASCO	114249	San Agustin Elementary School	IROSIN
632	GALLANOSA, ADELIA POLO	114249	San Agustin Elementary School	IROSIN
633	GRINO, NANCY BALMES	114249	San Agustin Elementary School	IROSIN
634	ROMAN, NELIA FORTES	175014	Omagom Elementary School	IROSIN
635	REYES, LORNA JETOMO	175016	Severino E. Fortes Mem. School ES	IROSIN
636	BARAQUIEL, MARICRIS FAJARDO	302211	Gabao National High School	IROSIN
637	PUNIT, SYLVIA HAYAGAN	302211	Gabao National High School	IROSIN
638	ALAMARES, ANTONIO ALAN ANONUEVO	302212	Gallanosa National High School	IROSIN
639	ARAMBULO, LEONISA FUNA	302212	Gallanosa National High School	IROSIN
640	ARINGO, JOCELYN GUERRERO	302212	Gallanosa National High School	IROSIN
641	BAILON, CECILIA GAMOS	302212	Gallanosa National High School	IROSIN
642	BALAORO, JULIE CELSO	302212	Gallanosa National High School	IROSIN
643	BARAGA, ANALYN ALAMARES	302212	Gallanosa National High School	IROSIN
644	CANTUBA, RICHARD RECAÑA	302212	Gallanosa National High School	IROSIN
645	DOMINGUEZ, MELINDA BUATIN	302212	Gallanosa National High School	IROSIN
646	ENCINARES, JANET EMOR	302212	Gallanosa National High School	IROSIN
647	ESPENILLA, MA.LETICIA LAO	302212	Gallanosa National High School	IROSIN

NO.	NAME	SCHOOL ID	SCHOOL	MUNICIPALITY
648	EULIN, ALLIE GABITO	302212	Gallanosa National High School	IROSIN
649	GABITO, MARILOU DERI	302212	Gallanosa National High School	IROSIN
650	GALLEGO, JOSE FERRERAS	302212	Gallanosa National High School	IROSIN
651	GALOS, ELORA SOLERA	302212	Gallanosa National High School	IROSIN
652	GUAÑIZO, JAY-AR LERIO	302212	Gallanosa National High School	IROSIN
653	HABLA, RUBY GUARDIAN	302212	Gallanosa National High School	IROSIN
654	HUGO, ESMERALDA ARAÑA	302212	Gallanosa National High School	IROSIN
655	IGNACIO, MARIA ELINOR ESTERA	302212	Gallanosa National High School	IROSIN
656	LITA, JERIDA DIVINAGRACIA	302212	Gallanosa National High School	IROSIN
657	MARCILLANA, MARICEL GARAI	302212	Gallanosa National High School	IROSIN
658	MONTABLAN, MARUWIN LADIERO	302212	Gallanosa National High School	IROSIN
659	PABILANE, CHRISTINE GIME	302212	Gallanosa National High School	IROSIN
660	PRETISTA, CESAR JR MASAMOC	302212	Gallanosa National High School	IROSIN
661	RIMPOLA, MARY ANN MALAPITAN	302212	Gallanosa National High School	IROSIN
662	CAILING, JOELANDO ARMERO	302215	Irosin North National High School	IROSIN
663	ELMA, DAISY FAUNE	302215	Irosin North National High School	IROSIN
664	ESCOTO, MELVIN ARTIAGA	302215	Irosin North National High School	IROSIN
665	ESTOPARE, ARWIN BANUELOS	302215	Irosin North National High School	IROSIN
666	GERERO, IVY GAMBA	302215	Irosin North National High School	IROSIN
667	SEPULVIDA, EDISON GRECIA	302215	Irosin North National High School	IROSIN
668	ASTILLERO, RODOLFO BUENAFLO	501525	Patag Integrated School	IROSIN
669	DIRELO, JOSEMEL ALAMA	501525	Patag Integrated School	IROSIN
670	MANALILI, GRACE CHAVEZ	501525	Patag Integrated School	IROSIN
671	VIDAR, MARIA VICTORIA NICOL	501525	Patag Integrated School	IROSIN
672	GILE, WELMA GERMEDIA	502085	Batang Integrated School	IROSIN
673	NAVARRO, JENNIFER JASARENO	502085	Batang Integrated School	IROSIN
674	BALEZA, MARY GRACE SOLOMON	114250	Anog ES	JUBAN
675	BALIN, ROMELDA OLIVARIA	114251	Bacolod ES	JUBAN
676	DESPABILADERAS, DONNA ESCOTE	114256	Catanagan ES	JUBAN
677	GRAJO, JENNELYN DEOCAREZA	114256	Catanagan ES	JUBAN
678	RAMIREZ, MARION GUEVARA	114256	Catanagan ES	JUBAN
679	EMBILE, LORENA PURTON	114257	Catanusan ES	JUBAN
680	FLORIDA, ELISA FULAY	114258	Cogon ES	JUBAN
681	GUERRERO, MARCELA GUEVARA	114258	Cogon ES	JUBAN
682	PELLEJERA, GINA HERMIDA	114258	Cogon ES	JUBAN
683	GUAB, AILEEN HIBAN	114259	Embarcadero ES	JUBAN
684	HABLA, MAREYCEL DON	114259	Embarcadero ES	JUBAN
685	DIOLA, GERALENE BALBEDINA	114260	Grefalda ES	JUBAN
686	BOLAWAN, CARME OLONDRIZ	114261	Guruyan ES	JUBAN
687	BUBAN, MOISES BERMEO	114261	Guruyan ES	JUBAN
688	FREJAS, LARA DELOS REYES	114261	Guruyan ES	JUBAN
689	RIOS, LYRA LAARNI LADIMO	114261	Guruyan ES	JUBAN
690	ARNES, ROWENA DELLOSA	114262	Jagusara ES	JUBAN
691	BADIAN, MARIA CRISTINE LEDESMA	114262	Jagusara ES	JUBAN
692	LABO, MILAGROS BONOS	114262	Jagusara ES	JUBAN
693	GREFALDEO, REALIZA BANDAL	114263	Jose G. Alindogan ES	JUBAN
694	GUMAL, ROLITO MAGALLONES	114263	Jose G. Alindogan ES	JUBAN
695	HUBILLA, MA. ROMANA BALEZA	114263	Jose G. Alindogan ES	JUBAN
696	JOLO, LEIZEL GREFALDEO	114263	Jose G. Alindogan ES	JUBAN
697	SALAZAR, ALMA TUSCANO	114265	Mario G. Guarina ES	JUBAN
698	SOLANO, CRISTINA DEVERLA	114266	Putingsapa ES	JUBAN
699	DASALLA, YOLANDA ESPANO	114268	SANGKAYON ELEMENTARY SCHOOL	JUBAN
700	ESBER, MARILYN GUAB	114268	SANGKAYON ELEMENTARY SCHOOL	JUBAN
701	ESTERA, CONCEPCION GREFALDO	114268	SANGKAYON ELEMENTARY SCHOOL	JUBAN
702	OLIVAR, LEA DOMALAON	114268	SANGKAYON ELEMENTARY SCHOOL	JUBAN
703	ENANO, ANGELITA GEUL	114272	Tublifon ES	JUBAN
704	AREVALO, JOHN JOHN CERQUILLO	302181	Olimpio A. Guarin Jr. National High School	JUBAN
705	CABALLERA, MARILOU CHAVEZ	302181	Olimpio A. Guarin Jr. National High School	JUBAN
706	CILLE, LENY JETAJOBE	302181	Olimpio A. Guarin Jr. National High School	JUBAN

NO.	NAME	SCHOOL ID	SCHOOL	MUNICIPALITY
707	GOSGOLAN, MICHELE CAYETANO	302181	Olimpio A. Guarin Jr. National High School	JUBAN
708	GRESOLA, EDUARDO BASE	302181	Olimpio A. Guarin Jr. National High School	JUBAN
709	JURADO, JENNIFER FURING	302181	Olimpio A. Guarin Jr. National High School	JUBAN
710	LEGASPI, MARIA MITOS MISOLANIA	302181	Olimpio A. Guarin Jr. National High School	JUBAN
711	DICHOSO, SALOME GREFALDO	302186	Biriran National High School	JUBAN
712	ESCARCHA, MARTIN SIMEON	302186	Biriran National High School	JUBAN
713	MIRANDA, DAVID BONGON	302186	Biriran National High School	JUBAN
714	GRATUITO, GINA HERRERO	302187	Juban High School	JUBAN
715	LADIP, GLORIA LOZADA	302187	Juban High School	JUBAN
716	AREVALO, MELODY PURTON	302187	Juban High School	JUBAN
717	BALLADOLID, MA MENA HABOC	302187	Juban High School	JUBAN
718	DERI, NOE BANAAG	302187	Juban High School	JUBAN
719	DINO, DENNIS VALLADOLID	302187	Juban High School	JUBAN
720	FORTES, ANGELITA GUEVARA	302187	Juban High School	JUBAN
721	FUENSALIDA, GINA SANTIAGO	302187	Juban High School	JUBAN
722	GREFALDEO, JOSELITO ORTEGO	302187	Juban High School	JUBAN
723	GUERRERO, EDEN FORTE	302187	Juban High School	JUBAN
724	MANZANILLA, CHARINA FUNGO	302187	Juban High School	JUBAN
725	TIAMSON, RENANTE CRESIDIO	302187	Juban High School	JUBAN
726	BRUCELO, RUBY ADINO	114273	Anibong ES	MAGALLANES
727	BURTON, MARIA RICA DAÑO	114274	Behia Elementary School	MAGALLANES
728	DIMAANO, GERALDINE JANABAN	114274	Behia Elementary School	MAGALLANES
729	DOROL, ROSEBUD HILIG	114274	Behia Elementary School	MAGALLANES
730	RICAFORT JR., JOSE PALOMA	114274	Behia Elementary School	MAGALLANES
731	DATU, JOSEPHINE DIMAANO	114275	Biga ES	MAGALLANES
732	HICOM, MEREDITH LUNA	114275	Biga ES	MAGALLANES
733	CONDA, ANALYN IBANEZ	114276	Cagbolo ES	MAGALLANES
734	ANDES, RANIE MONTECALVO	114278	Dona Olimpia. De Castro Mella ES	MAGALLANES
735	BONON, RUBY MERCIALES	114278	Dona Olimpia. De Castro Mella ES	MAGALLANES
736	DEL VALLE, EUFEMIA NACE	114281	Magallanes North CS	MAGALLANES
737	DIAZ, MARCEL HERMIDA	114281	Magallanes North CS	MAGALLANES
738	NAVA, MARIVIC HERMIDA	114281	Magallanes North CS	MAGALLANES
739	ESPELA, DIONISIA TABILIN	114282	Pili ES	MAGALLANES
740	HATE, JANICE LAURA	114282	Pili ES	MAGALLANES
741	BUAN, JENNIFER GOPEZ	114283	Sta. Elena Elementary School	MAGALLANES
742	DOLOIRAS, JANET LAURA	114283	Sta. Elena Elementary School	MAGALLANES
743	OLIVA, SALVACION TARIGA	114283	Sta. Elena Elementary School	MAGALLANES
744	TOLOSA, JENET BELMONTE	114283	Sta. Elena Elementary School	MAGALLANES
745	AÑONUEVO, MARICEL PAREJA	114284	Sta. Lourdes ES	MAGALLANES
746	BARAQUIEL, JANETH ESCARIO	114284	Sta. Lourdes ES	MAGALLANES
747	SABA, MA. ESTER HERNANDEZ	114284	Sta. Lourdes ES	MAGALLANES
748	SALES, GINA BURTON	114284	Sta. Lourdes ES	MAGALLANES
749	LADESMA, MELANIE MAGLAQUE	114285	Tagas ES	MAGALLANES
750	GRAJO, EVELYN BILANDO	114288	Biton ES	MAGALLANES
751	CEDRO, SALVACION BORNEL	114289	Bulala Elementary School	MAGALLANES
752	MALLE, CHERRY BARREDA	114289	Bulala Elementary School	MAGALLANES
753	DANAO, MA. APRIL HERMIDA	114290	Busay ES	MAGALLANES
754	MORTEGA, MARINEL BORLON	114291	Caditaan ES	MAGALLANES
755	DREO, ARLYN DIAZ	114291	Caditaan ES	MAGALLANES
756	VILLA, MARIE JOY HATE	114291	Caditaan ES	MAGALLANES
757	ARIETA, CHARIE LORENO	114292	Eduardo Lee Chan MS (Magallanes South)	MAGALLANES
758	AYANA, JANICE HILOTIN	114292	Eduardo Lee Chan MS (Magallanes South)	MAGALLANES
759	GRUTAS, LIELANI BUBAN	114292	Eduardo Lee Chan MS (Magallanes South)	MAGALLANES
760	MALONZO, MARIE PERDIGON	114292	Eduardo Lee Chan MS (Magallanes South)	MAGALLANES
761	MENDOZA, RENILA GENTOLIZO	114292	Eduardo Lee Chan MS (Magallanes South)	MAGALLANES
762	HANTIC, CHARMAINE APUYA	114293	Ginangra ES	MAGALLANES
763	PALANCA, CHRISTOPHER BORLON	114293	Ginangra ES	MAGALLANES
764	GARCIA, SALVE GERERO	114294	Lapinig ES	MAGALLANES
765	GERALDINO, LIZEL MARASIGAN	114294	Lapinig ES	MAGALLANES

NO.	NAME	SCHOOL ID	SCHOOL	MUNICIPALITY
766	LAGUERTA, JUVY ROSARE	114294	Lapinig ES	MAGALLANES
767	DOGILLO, ROSELYN CARLOTO	114295	Magsaysay ES	MAGALLANES
768	BARREDA, MAGNOLIA BUBAN	114299	Siuton ES	MAGALLANES
769	CANOTAL, ROSELLIE BALBASTRO	114299	Siuton ES	MAGALLANES
770	CARRASCAL, CARY ANONUEVO	114299	Siuton ES	MAGALLANES
771	COBILLA, ZENAIDA ESCULTURA	114299	Siuton ES	MAGALLANES
772	FUMERA, CHERIE BUENAFLORE	114299	Siuton ES	MAGALLANES
773	VERGARA, EVA SENOSIN	114299	Siuton ES	MAGALLANES
774	CATALAN, RECHILDA HILOTIN	302220	Magallanes National Vocational High School	MAGALLANES
775	ESCRIBANO, MELISSA HERMIDA	302220	Magallanes National Vocational High School	MAGALLANES
776	HERMIDA, RENE HANDIG	302220	Magallanes National Vocational High School	MAGALLANES
777	HUNAT, ANGELO HEBRES	302220	Magallanes National Vocational High School	MAGALLANES
778	MANAGO, WILMA BARAQUIEL	302220	Magallanes National Vocational High School	MAGALLANES
779	MIRABEL, JEZZER ASENJO	302220	Magallanes National Vocational High School	MAGALLANES
780	BALOYO, ANTHONY MALAYO	302222	Magallanes National High School	MAGALLANES
781	BLANZA, CYRUS BALLAO	302222	Magallanes National High School	MAGALLANES
782	CORNELIO, HILDA BUBAN	302222	Magallanes National High School	MAGALLANES
783	CORTEZ, MARIFE LITERATO	302222	Magallanes National High School	MAGALLANES
784	DUMAGAS, EDGARDO CASTILLO	302222	Magallanes National High School	MAGALLANES
785	LUCENARIO, OLIVER BARLIZO	302222	Magallanes National High School	MAGALLANES
786	NAVAS, GILBERT CAUBANG	302222	Magallanes National High School	MAGALLANES
787	LAURA, ANTONIO JR. GUMAL	302231	PILI NATIONAL HIGH SCHOOL	MAGALLANES
788	ADISON, CHRIS GENAVIA	114302	Banogao Elementary School	MATNOG
789	GARDON, MARICEL GAYO	114304	Bolo ES	MATNOG
790	GIGO, AMALIA GEALONE	114304	Bolo ES	MATNOG
791	ATURDA, EMERLY DELA VEGA	114310	Coron-Coron ES	MATNOG
792	GODALLE, DONNA NAGA	114310	Coron-Coron ES	MATNOG
793	MAHUSAY, DUANE ATOK	114310	Coron-Coron ES	MATNOG
794	MARANO, MA. SYRA GOGOLIN	114310	Coron-Coron ES	MATNOG
795	PABON, EDEN ESTOPIN	114310	Coron-Coron ES	MATNOG
796	DONGAOL, ADORA GARALDE	114311	Culasi ES	MATNOG
797	MARQUEZ, ULITA GARGALLO	114311	Culasi ES	MATNOG
798	GONZALGO, MARIETA AMANTE	114312	Gadgaron ES	MATNOG
799	LADIP, PORTIA DURIAN	114312	Gadgaron ES	MATNOG
800	MEDICE, JOAN GARRIDO	114312	Gadgaron ES	MATNOG
801	ALONTE, ALLAN GATACILO	114315	Hidhid ES	MATNOG
802	GICARO, MARICAR GENAVIA	114315	Hidhid ES	MATNOG
803	HIPOS, MA. KRISTINA CALVARIO	114316	Jose C. Frencillo ES	MATNOG
804	GILE, JEANY GARDUQUE	114318	Lajong ES	MATNOG
805	AQUE, RONMEL MAHINAY	114320	Manjumlad ES	MATNOG
806	AQUE, JUVILLE GARINTO	114322	Matnog CS	MATNOG
807	BARCARSE, RUBEN ARELLANO	114322	Matnog CS	MATNOG
808	BAYRANTE, ANGELINE FANTINALGO	114322	Matnog CS	MATNOG
809	DIOQUINO, MA. GLENDA RABULAN	114322	Matnog CS	MATNOG
810	ESCARCHA, HELEN GILLEGO	114322	Matnog CS	MATNOG
811	FABELLON, LILIBETH GAYANES	114322	Matnog CS	MATNOG
812	GALERIA, YVONNIE ZAMORA	114322	Matnog CS	MATNOG
813	GARALDE, JENNIFER GARRIDO	114322	Matnog CS	MATNOG
814	LAREZA, SARAH BUENVIOJE	114322	Matnog CS	MATNOG
815	SUS, GINA GARAIS	114322	Matnog CS	MATNOG
816	ROLLE, CRISTINE FONTELAR	114323	Paghuliran ES	MATNOG
817	GENERALO, MARIFE GESTIADA	114324	Pange ES	MATNOG
818	MOLARTO, MARICEL BAYOCA	114325	Pawa ES	MATNOG
819	ADISON, ARWIN JERESANO	114328	Sinatmacan ES	MATNOG
820	FAJARDO, MARIA MELANIE GAVARRA	114328	Sinatmacan ES	MATNOG
821	FULGAR, CATHERINE VILLAREAL	114329	Sinebaran ES	MATNOG
822	GILLEGO, OFELIA GIRAY	114329	Sinebaran ES	MATNOG
823	ANTUERPIA, CELINA GARDON	114332	Sua ES	MATNOG
824	BALAGUER, HOMER GADBILAO	114332	Sua ES	MATNOG

NO.	NAME	SCHOOL ID	SCHOOL	MUNICIPALITY
825	GODOY, RODELO BELISTA	114332	Sua ES	MATNOG
826	GALLANO, AMY GARCERA	114333	Tablac ES	MATNOG
827	ZAFE, SWEDE BUENA	114333	Tablac ES	MATNOG
828	GARALDE, TERESITA GIPONAO	175003	Banuang-Daan Elementary School	MATNOG
829	TENORIO, CHARLIE CASTILLO	302200	Culasi National High School	MATNOG
830	DEOCAREZA, LAARNI GAVANZO	302225	Matnog National High School	MATNOG
831	GARAIS, AMIEL ERNACIO	302225	Matnog National High School	MATNOG
832	GARBIN, LETICIA FUSTER	302225	Matnog National High School	MATNOG
833	GARCIA, ROSILA FRANCISCO	302225	Matnog National High School	MATNOG
834	GEVA, NANETH GATON	302225	Matnog National High School	MATNOG
835	LABITAG, EVELYN GARAIS	302225	Matnog National High School	MATNOG
836	LAGAJINO, JUBELLE GRACE BELO	302225	Matnog National High School	MATNOG
837	LURA, GLENNIE OLIVENZA	302225	Matnog National High School	MATNOG
838	REBOLLIDO, JAIME LEAL	302225	Matnog National High School	MATNOG
839	UNDANG, ESTER ESTADOLA	302225	Matnog National High School	MATNOG
840	GARALDE, REY GIPANAO	302246	Sua High School, Matnog	MATNOG
841	CATIMBANG, EMMANUEL LEO PEDRIS	310010	Tiong Hen So Memorial High School	MATNOG
842	FULGUERAS, RONNEL FLORES	310010	Tiong Hen So Memorial High School	MATNOG
843	BALANA, ESTRELLA BLASQUEA'O	501782	Sisigon Integrated School	MATNOG
844	BORCK, JOVEAN GESTOLE	501782	Sisigon Integrated School	MATNOG
845	DACILLO, LIZA GONZALGO	501782	Sisigon Integrated School	MATNOG
846	GOGOLA, ARLYN AGNOTE	501782	Sisigon Integrated School	MATNOG
847	HACILDO, YOLANDA GEPULLE	502289	Calintaan Integrated School	MATNOG
848	MAGBALAY, CONIE DIOLATA	502289	Calintaan Integrated School	MATNOG
849	PERTEZ, MARGILYN TEODOSIO	114336	Abas ES	PILAR
850	VENUS, VILMA ANONUEVO	114336	Abas ES	PILAR
851	CHAVEZ, SALVACION ASILO	114338	Banuyo ES	PILAR
852	MARINDA, NONIA GRUTA	114338	Banuyo ES	PILAR
853	MOLLEDA, MEDIATRIX MAGDAMIT	114338	Banuyo ES	PILAR
854	MAGALONA, ELMER BISMONTE	114339	Binanuahan ES	PILAR
855	LOBRIGO, MARY ANN BENICARLO	114341	Calongay Elementary School	PILAR
856	ESPINOSA, LILIBETH ARGOTE	114343	Dapdap ES	PILAR
857	MADRID, GLEMMIA MOLINES	114343	Dapdap ES	PILAR
858	ACUÑANA, JENETTE ABITRIA	114345	Ginablan ES	PILAR
859	CADIZ, ROSEMARIE MARTILLAN	114345	Ginablan ES	PILAR
860	DE BORJA, NORA DIESTA	114345	Ginablan ES	PILAR
861	MATIAS, GINA DEANG	114345	Ginablan ES	PILAR
862	TURREDA, MARISSA BAHILLO	114345	Ginablan ES	PILAR
863	DAGTA, MICHELLE MEJINO	114346	Guiron ES	PILAR
864	MONTALES, RUTH LIPATA	114349	Lumbang ES	PILAR
865	TAGLE, ANNABELLE BLANQUISCO	114349	Lumbang ES	PILAR
866	BORABON, MA SOCORRO ABADINES	114350	Lungib ES	PILAR
867	LONDONIO, LEILENE MACASINAG	114350	Lungib ES	PILAR
868	MARANTAL, RODANTE MENDOZA	114350	Lungib ES	PILAR
869	AGNOTE, MARIFE MANCILLA	114351	Mabanate ES	PILAR
870	CHAVEZ, LANY NECERIO	114351	Mabanate ES	PILAR
871	LOZANO, JOSELYN BALONZO	114351	Mabanate ES	PILAR
872	ROMERO, EVA QUINTO	114351	Mabanate ES	PILAR
873	SANTONIA, ARLENE NOVELO	114351	Mabanate ES	PILAR
874	TEE, HILDA MADRID	114352	Marifosque ES	PILAR
875	BELARMINO, MARIA MELODY BLACER	114353	Palanas ES	PILAR
876	LOPEZ, EMILY BENASA	114353	Palanas ES	PILAR
877	LOPEZ, JENEBETH ESPENA	114353	Palanas ES	PILAR
878	BONGOS, BEVERLYN ANDES	114355	Pangpang ES	PILAR
879	LATOGA, MARIVIC ANDES	114355	Pangpang ES	PILAR
880	ARONG, LOVELYN CAS	114356	Pilar I Central School	PILAR
881	ESTRERA, ALIANDRE BAYOMO	114356	Pilar I Central School	PILAR
882	NAVORA, PEACHY MARIE CRUZ	114356	Pilar I Central School	PILAR
883	PERFECTO, MARY JOY LUMBAO	114356	Pilar I Central School	PILAR

NO.	NAME	SCHOOL ID	SCHOOL	MUNICIPALITY
884	REVERENTE, BLESILA MANANES	114356	Pilar I Central School	PILAR
885	BOBIER, ROWENA JACOB	114357	Pineda ES	PILAR
886	LUMBAO, ALEJA-AIZA JACOB	114357	Pineda ES	PILAR
887	MALTO, MARIA FE BASE	114358	Provenir ES	PILAR
888	MONTALES, JARDE MACINAS	114358	Provenir ES	PILAR
889	OBING, VIVIAN MANUEL	114358	Provenir ES	PILAR
890	PASCUAL, HELEN OLOYA	114358	Provenir ES	PILAR
891	ASPAN, ALWIN PASAMONTE	114359	San Antonio ES	PILAR
892	LOPEZ, CIELO LERIT	114359	San Antonio ES	PILAR
893	MALANA, SHEENA LLAMIDO	114359	San Antonio ES	PILAR
894	NAPIRE, TIARA LOU LAPENA	114359	San Antonio ES	PILAR
895	SALVADOR, LEONA MAGDAONG	114359	San Antonio ES	PILAR
896	TAROG, JONATHAN MILLABAS	114359	San Antonio ES	PILAR
897	TAROG, ROSALINA BELEN	114359	San Antonio ES	PILAR
898	IBANEZ, RYAN PAROL	114361	Sta. Fe ES	PILAR
899	PERDIZ, ERWIN LOMBOY	114361	Sta. Fe ES	PILAR
900	CHAVEZ, EVANGELINE LUMABAN	114362	Tinago ES	PILAR
901	LUMABAN, JOSE JASPER BANICO	114362	Tinago ES	PILAR
902	QUE, ANNALIZA CANO	114362	Tinago ES	PILAR
903	QUE, FERNANDO NUELAN	114362	Tinago ES	PILAR
904	REBOSURA, ROSELYN ARDALES	114363	Tingco Elementary School	PILAR
905	BALANTA, BEVERLY MIRAFLORES	114364	Abucay ES	PILAR
906	MACANDOG, GINA MIRABEL	114364	Abucay ES	PILAR
907	MARINDA, MELINDA NAYVE	114364	Abucay ES	PILAR
908	MONZALES, SANTA AVILLANOZA	114365	Bayasong Elementary School	PILAR
909	ORTICIO, SYLVIA ANDES	114365	Bayasong Elementary School	PILAR
910	BAUSA, JOSEPHINE BALINO	114367	Cagbacong ES	PILAR
911	MAPA, NANCY LLONA	114367	Cagbacong ES	PILAR
912	MARCHAN, SHERRYL DIVINA	114367	Cagbacong ES	PILAR
913	PASADILLA, RUTH LUNA	114367	Cagbacong ES	PILAR
914	MATUSA, REGINA LOTERIA'A	114369	Catamlangan ES	PILAR
915	NACE, SARA JEAN LODOR	114369	Catamlangan ES	PILAR
916	ABELLANO, CHERRYL NABALONA	114372	Del Rosario ES	PILAR
917	BRON, CHARMAINE FAITH FRONDOZO	114372	Del Rosario ES	PILAR
918	LUBIANO, GERALDINE ALAMO	114372	Del Rosario ES	PILAR
919	BOTIN, EDZEL LUMABAN	114373	Esmerada ES	PILAR
920	MAQUINANA, NINO CANON	114373	Esmerada ES	PILAR
921	APARICIO, DORIS MENDEVIL	114374	Esperanza ES	PILAR
922	ESPENIDA, NANCY LLAVANES	114375	Inang Elementary School	PILAR
923	MONDRAGON, CRISTY LOFAMIA	114376	Leona ES	PILAR
924	AQUINO, ANTONIO JR. LEGASTE	114381	Millabas ES	PILAR
925	ROBRIGADO, MA. AIMEE GONZALES	114382	Naspi Elementary School	PILAR
926	ENANO, RICHARD RAPIZ	114383	Pilar II CS	PILAR
927	LORETO, MA. SHIELA ENDAYA	114383	Pilar II CS	PILAR
928	MIRANDA, MELANIE MILLENA	114383	Pilar II CS	PILAR
929	BORABON, ROSE ANN GUTIERREZ	114387	Sacnangan ES	PILAR
930	NUA'EZ, ROMERICO NATE	114387	Sacnangan ES	PILAR
931	DUKA, MARILYN DIONES	114388	Salvacion ES	PILAR
932	LOVINO, MARILOU MEJILA	114388	Salvacion ES	PILAR
933	AREL, SHIELAMIE LEOSALA	302179	Abucay National High School	PILAR
934	CURIOSO, CHRISTOPHER JOHN MIRAFLORES	302179	Abucay National High School	PILAR
935	DE BORJA, RONY INTERINO	302179	Abucay National High School	PILAR
936	FUNELAS, ROMEO LOFAMIA	302179	Abucay National High School	PILAR
937	PANCHO, DOMINADOR III LOSITO	302179	Abucay National High School	PILAR
938	ROCIMO, MA. LEILAN ARCANGEL	302179	Abucay National High School	PILAR
939	LAZARTE, BRIX MADELO	302180	Bayasong National High School	PILAR
940	LOBRIN, CHRISTIAN DESUYO	302180	Bayasong National High School	PILAR
941	REALUBIT, JENNIFER MASILANG	302180	Bayasong National High School	PILAR
942	LLARENA, MARALIE ARGOTE	302217	Lungib National High School	PILAR

NO.	NAME	SCHOOL ID	SCHOOL	MUNICIPALITY
943	MONTALES, ROLANDO MACINAS	302217	Lungib National High School	PILAR
944	ATUTUBO, SALVE LLANDELAR	302224	Manuel T. Sia Memorial High School	PILAR
945	BOLANOS, EDNA GORDOLA	302224	Manuel T. Sia Memorial High School	PILAR
946	CABILES, DESIREE LOVERANES	302224	Manuel T. Sia Memorial High School	PILAR
947	LOTIVIO, LYAN VILLANUEVA	302224	Manuel T. Sia Memorial High School	PILAR
948	MEDALLA, KATHERINE PADILLA	302224	Manuel T. Sia Memorial High School	PILAR
949	MORADA, JEROME NARRA	302224	Manuel T. Sia Memorial High School	PILAR
950	ALCANTARA, SALVE BORJA	302230	Pilar National Comprehensive High School	PILAR
951	ALVARADO, ZENaida NEGRITE	302230	Pilar National Comprehensive High School	PILAR
952	BANGA, OLIVIA ANGELES	302230	Pilar National Comprehensive High School	PILAR
953	BAUTISTA, MILDRED ESCANILLA	302230	Pilar National Comprehensive High School	PILAR
954	BELARO, CHRISTIAN CHAVEZ	302230	Pilar National Comprehensive High School	PILAR
955	CORDERO, NERMA AJERO	302230	Pilar National Comprehensive High School	PILAR
956	DYKIA, AGNES GALOSMO	302230	Pilar National Comprehensive High School	PILAR
957	ELLI, MELCHE ATUN	302230	Pilar National Comprehensive High School	PILAR
958	ELLI, RENANTE ENCINARES	302230	Pilar National Comprehensive High School	PILAR
959	JOGNO, CARLO DE BORJA	302230	Pilar National Comprehensive High School	PILAR
960	LOMA, NORMAN PARLAN	302230	Pilar National Comprehensive High School	PILAR
961	MAGDARAOG, GINA LLANTINO	302230	Pilar National Comprehensive High School	PILAR
962	MAQUINANA, LEWELYN OBING	302230	Pilar National Comprehensive High School	PILAR
963	MOLLEDA, MARIA LOURDES MADRID	302230	Pilar National Comprehensive High School	PILAR
964	RAZO, IMELDA ABUEDO	302230	Pilar National Comprehensive High School	PILAR
965	GRANADILLOS, FEBIELYN NUDO	302236	Salvacion National High School	PILAR
966	LOQUILLANO, LANI MOYAN	302236	Salvacion National High School	PILAR
967	LOQUINARIO, ALLAN MAGALONA	302236	Salvacion National High School	PILAR
968	LORILLA, DIANAROSE LOREJO	302236	Salvacion National High School	PILAR
969	MADRONIO, MA. ANTONETTE CERILLO	302236	Salvacion National High School	PILAR
970	MARCO, RAZEL ABION	302236	Salvacion National High School	PILAR
971	PANCHO, FERNANDO LOSITO	302236	Salvacion National High School	PILAR
972	SANDIA, MERJORIE MILLENA	302236	Salvacion National High School	PILAR
973	DURANA, ELBA ENESIO	114390	Bulawan ES	PRIETO DIAZ
974	BALLENA, RHEA BAYOCA	114391	Calao ES	PRIETO DIAZ
975	DON, ROWENA FORNELOZA	114391	Calao ES	PRIETO DIAZ
976	ESPEÑA, CATHERINE FIDELSON	114391	Calao ES	PRIETO DIAZ
977	ESPLANA, JERRYLYN BOTON	114391	Calao ES	PRIETO DIAZ
978	ARCEGA, MILA DIPAD	114394	Lupi Elementary School	PRIETO DIAZ
979	BONITO, ELENA DETABLAN	114394	Lupi Elementary School	PRIETO DIAZ
980	DOMDOM, MARIA WINA ESCARIO	114394	Lupi Elementary School	PRIETO DIAZ
981	DISCAYA, SHERYL DOMASIG	114395	Manlabong ES	PRIETO DIAZ
982	ABAYAN, DAISY EBUENGA	114396	Prieto Diaz CS	PRIETO DIAZ
983	ADVINCULA, ESTELA EVA	114396	Prieto Diaz CS	PRIETO DIAZ
984	AYCARDO, ROSELLE LEONCITO	114396	Prieto Diaz CS	PRIETO DIAZ
985	BARTOLOME, HAIDA ALFONSO	114396	Prieto Diaz CS	PRIETO DIAZ
986	DIONEDA, MARGARET BOLIMA	114396	Prieto Diaz CS	PRIETO DIAZ
987	DOMANAIS, MA. ISABEL DELIGERO	114396	Prieto Diaz CS	PRIETO DIAZ
988	DOMANAIS, MA. TERESITA ENGUERRA	114396	Prieto Diaz CS	PRIETO DIAZ
989	DOMANAIS, MELBA DOMDOM	114396	Prieto Diaz CS	PRIETO DIAZ
990	JALMANZAR, LOLITA AREVALO	114396	Prieto Diaz CS	PRIETO DIAZ
991	ENCELA, MA.THERESA DINO	114397	Quidolog ES	PRIETO DIAZ
992	DOMAGTOY, LIZ FIDELSON	114400	San Isidro Elementary School	PRIETO DIAZ
993	EBUENGA, SHEERAH EMATA	114400	San Isidro Elementary School	PRIETO DIAZ
994	EMNIL, RAMON SOLIDAD	114400	San Isidro Elementary School	PRIETO DIAZ
995	EREVE, RHEA ENCINARES	114400	San Isidro Elementary School	PRIETO DIAZ
996	FIDELSON, LILIAN DEUNA	114400	San Isidro Elementary School	PRIETO DIAZ
997	TRETASCO, MARIANNE DIPAD	114403	San Ramon ES	PRIETO DIAZ
998	GAZO, JEANETTE DOROLIAT	114404	Sta. Lourdes ES	PRIETO DIAZ
999	REAS, JACQUELINE NAVERA	114406	Talisayan ES	PRIETO DIAZ
1000	ERNACIO, MA. TERESA ENGUERRA	114407	ULAG ELEMENTARY SCHOOL	PRIETO DIAZ
1001	MIRAS, IMELDA DIOQUINO	114407	ULAG ELEMENTARY SCHOOL	PRIETO DIAZ

NO.	NAME	SCHOOL ID	SCHOOL	MUNICIPALITY
1002	ROLLO, ALMA DONES	114407	ULAG ELEMENTARY SCHOOL	PRIETO DIAZ
1003	TUBALENAL, JEAN EMANO	175006	Nenita E. Oandasan Mem. Sch.	PRIETO DIAZ
1004	ALIBANBAN, JOVY JAMOLIN	302223	Manlabong National High School	PRIETO DIAZ
1005	DIÑO, DINDO DESTAJO	302223	Manlabong National High School	PRIETO DIAZ
1006	ESCANILLA, MARILOU AGUILA	302223	Manlabong National High School	PRIETO DIAZ
1007	BOBILES, MARILOU DIVINA	302232	Prieto Diaz National High School	PRIETO DIAZ
1008	CEPRES, MARILYN OZAETA	302232	Prieto Diaz National High School	PRIETO DIAZ
1009	DETICIO, ROSELYN DELINO	302232	Prieto Diaz National High School	PRIETO DIAZ
1010	DIÑO, GODFREY DACANAY	302232	Prieto Diaz National High School	PRIETO DIAZ
1011	DOMALAON, MARICEL DEUNA	302232	Prieto Diaz National High School	PRIETO DIAZ
1012	LLANERA, RUBY ESCUREL	302232	Prieto Diaz National High School	PRIETO DIAZ
1013	LLODERES, JOY DULVA	302232	Prieto Diaz National High School	PRIETO DIAZ
1014	SUPELANA, TEOFISTA FRANCE	302232	Prieto Diaz National High School	PRIETO DIAZ
1015	GARROTE, RUVI ANA GAJO	114414	San Sebastian ES	SANTA MAGDALENA
1016	FRAGO, MARION NOSARES	114415	Sta. Magdalena CS	SANTA MAGDALENA
1017	FRILLES, MARY GRACE OLIQUINO	114415	Sta. Magdalena CS	SANTA MAGDALENA
1018	MANGA, IMELDA FREMISTA	114415	Sta. Magdalena CS	SANTA MAGDALENA
1019	FRESNIDO, RICO MANGA	114416	Talaonga ES	SANTA MAGDALENA
1020	FUNGO, ROSELYN FUENTES	114416	Talaonga ES	SANTA MAGDALENA
1021	FURIO, ESTRELLA FUENTES	114416	Talaonga ES	SANTA MAGDALENA
1022	GUETAN, MARISSA FRAGA	114416	Talaonga ES	SANTA MAGDALENA
1023	DIONEDA, JOSEFINA B	302245	Sta. Magdalena National High School	SANTA MAGDALENA
1024	CORREA, LIZA DE VERA	302245	Sta. Magdalena National High School	SANTA MAGDALENA
1025	DORMITORIO, GINA GUATNO	302245	Sta. Magdalena National High School	SANTA MAGDALENA
1026	ESCARDA, RELLY FERCIA	302245	Sta. Magdalena National High School	SANTA MAGDALENA
1027	ESPUELAS, JAIME GARAIS	302245	Sta. Magdalena National High School	SANTA MAGDALENA
1028	EUPEÑA, EVELYN GUTIERREZ	302245	Sta. Magdalena National High School	SANTA MAGDALENA
1029	FELICES, LORENA BAYLON	302245	Sta. Magdalena National High School	SANTA MAGDALENA
1030	FORTE, JHULIE MARIE FAUSTINO	302245	Sta. Magdalena National High School	SANTA MAGDALENA
1031	FRIVALDO, MA. ROSARIO GAMBA	302245	Sta. Magdalena National High School	SANTA MAGDALENA
1032	GAYANES, EFREN GAJO	302245	Sta. Magdalena National High School	SANTA MAGDALENA
1033	FORDELON, ARNEL JR GARCIA	302247	Talaonga National High School	SANTA MAGDALENA



Republika ng Pilipinas
Department of Education

Enclosure 2

UNDERTAKING

I, [full name], [position] of [school, division, region], [age], [civil status], [citizenship], and residing at [address] hereby agree to participate in the E-Learning Courses Scholarship Program provided by DepEd through NEAP.

- a. I acknowledge that I have been selected to participate in the program which aims to enhance my competencies and support my continuous development as a school leader/teacher.
- b. I confirm that I have the necessary access to a computer or laptop with internet connection to take the online courses.
- c. I will commit the necessary time and effort to engage with the course content, take responsibility for the activities, and complete assignments.
- d. I am aware that the courses are self-paced and recognize my responsibility to manage my time effectively to ensure the completion of the courses within a reasonable period of time.
- e. In line with the *No Disruption of Classes Policy*, I will ensure that my participation in the online courses will not interfere with my leadership/teaching and other responsibilities in school.
- f. I agree to submit required reports related to the scholarship program in a timely manner.
- g. I shall conduct myself in such a manner that will uphold the moral integrity and professionalism of a DepEd personnel and a public servant throughout the course.
- h. I shall apply the knowledge, skills, and learning experiences that I will gain from the courses in my professional practice.
- i. Should I fail to fulfill my commitment towards the completion of the available online courses without any valid reason, I agree to refund in full to DepEd such sums of money as may have been defrayed by the Philippine government in relation to the scholarship program.

By signing this undertaking, I recognize my personal responsibility for my professional growth and commit to the application of the knowledge and skills gained through this program to contribute positively to the enhancement of students' learning outcomes and the development of basic education in the country.

IN WITNESS WHEREOF, I have hereunto set my hand this _____ day of _____, 20____
at _____.

(Scholar's Name and Signature)

With the endorsement and approval of:

Schools Division Superintendent

SUBSCRIBED AND SWORN TO before me this _____ day of _____, 20____ in
_____.

Regional Director



Republic of the Philippines
Department of Education
Region V
SCHOOLS DIVISION OF SORSOGON

Enclosure 3

CONFIRMATION SLIP

This is to confirm my attendance in E- Learning Courses to DepEd Educators offered by the National Educators Academy of the Philippines.

LAST NAME	FIRST NAME	MIDDLE NAME
------------------	-------------------	--------------------

DISTRICT	SCHOOL
-----------------	---------------

SEX: M
F

CONTACT DETAILS:
a. Mobile Number: _____
b. DepEd Email Address: _____
c. Facebook Account: _____

Signature of Participant: _____



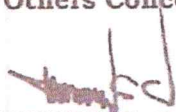
Balogo Sports Complex, Balogo, Sorsogon City, Sorsogon 4700
Landline: (056) 421-5415
Email: sorsogon@deped.gov.ph
Website: depedsorsogon.com.ph



Republika ng Pilipinas
Department of Education
 OFFICE OF THE UNDERSECRETARY
 HUMAN RESOURCE AND ORGANIZATIONAL DEVELOPMENT

MEMORANDUM
DM-OUHROD-2025-0127

TO : Regional Directors
 Schools Division Superintendents
 HRDD Chiefs / NEAP R Focal Persons
 School Heads
 All Others Concerned

FROM : 
WILFREDO E. CABRAL
 Undersecretary
 Human Resource and Organizational Development

SUBJECT : **PROVISION OF E-LEARNING COURSES TO DEPED EDUCATORS**

DATE : 16 January 2025

1. Pursuant to Republic Act No. 11713 "Excellence in Teacher Education Act" and DepEd Order No. 011, s. 2019 "Implementation of the National Educators Academy of the Philippines (NEAP) Transformation," NEAP is mandated to provide quality professional development (PD) programs to school leaders, in-service teachers, and other teaching-related personnel.
2. In support of this mandate, **NEAP shall provide e-learning courses** that are aligned with the professional development priorities for each target job group, through the **E-Learning Courses Scholarship Program**.
3. This program has the following objectives:
 - a. Enhance the professional competencies of school leaders and teachers through a diverse range of well-designed e-learning courses addressing their specific learning needs; and
 - b. Facilitate continuous and self-directed professional development of school leaders and teachers via an online platform, enabling flexible and self-paced learning that transcends time and location constraints.
4. Please refer to the table that follows for the links to the list of participants per intake and the corresponding schedule.

Participants	Link	Schedule	
		Exploration	Official Start
Intake 1	https://tinivuri.com/ElearningPaxIntake1	27 January - 04 February 2025	05 February 2025
Intake 2	https://tinivuri.com/ElearningPaxIntake2	21-29 April 2025	05 May 2025

The e-IPCRF ratings for 2022-2023 were used to determine the participants for each Intake.



5. Each selected participant will be granted a license to access the available e-learning courses. These courses can be accessed through a desktop computer or laptop with an internet connection.
6. The Regional Offices (ROs) and the Schools Division Offices (SDOs) are advised to strongly support the participation of the selected school leaders and teachers in this endeavor.
 - a. HRDD Chiefs/NEAP R Focal Persons in charge of scholarships and SDO HRTD SEPS and EPS must follow the terms of reference, procedures, and timeline for program implementation outlined in *Enclosure 1*.
 - b. School Heads/Heads of Offices are advised to implement arrangements to support the participation of teachers and school leaders in the e-learning courses.
 - c. The *No Disruption of Classes Policy* must be strictly observed at all times.
7. Participants are required to accomplish and submit an *Undertaking (Enclosure 2)*. ROs are expected to consolidate and submit these documents in PDF format to the NEAP Scholarship Secretariat through the link <https://tinyurl.com/4twn2j9h>.
8. An **Online Coordination Meeting** with HRDD Chiefs/NEAP R Focal Persons in charge of scholarships as well as SDO HRTD SEPS and EPS will be held on **17 January 2025 (Friday), 1:00 - 3:00 p.m.** via *Microsoft Teams* (<https://tinyurl.com/z45u34+d>). Please confirm attendance through <https://forms.office.com/r/nXoPxVtZy>.
9. To update our database, **all School Heads, Supervisors, Public Schools District Supervisors, and Head Teachers are required to complete the Data Profiling Form** through <https://forms.office.com/r/TKRTR9xzkw> by **07 March 2025**.
10. For any questions or clarifications, please reach out to the **NEAP Scholarship Secretariat** through email scholarships@deped.gov.ph or call (02) 8715-9919.
11. For immediate dissemination and appropriate action.

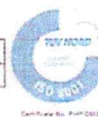
Copy furnished:
OFFICE OF THE SECRETARY

MALCOLM S. GARMA
Assistant Secretary for Operations



Room 102, Rizal Building, DepEd Complex, Meralco Ave., Pasig City 1600
 Telephone Nos.: (+632) 86337206, (+632) 86318494, (+632) 86366549
 Email Address: usec.hrod@deped.gov.ph | Website: www.deped.gov.ph

Doc. Ref. Code	DM-OUIHROD	Rev	00
Effectivity	03.23.2023	Page	2 of 2



Small text at the bottom right corner, possibly a reference or date.